



Statement of Qualifications

for

Municipal Engineering Services



TEXAS • OKLAHOMA • ARKANSAS • LOUISIANA
4445 SE Loop 286 Paris, TX 75460
t 903.785.0303 www.haytereng.com

Firm Overview

Fulfilling the infrastructure needs of municipalities and rural water utilities with practical solutions was our firm's founding principle in 1957. Over 60 years later, the firm continues to primarily serve municipal and rural water utility clients, but now also serves educational entities, private developers, and industrial groups. These services are offered in Texas, Oklahoma, Arkansas, and Louisiana.



From the beginning, careful attention to our clients' needs, budget and schedule has been a core principle. This will involve our technical capabilities but equally as important, open communication is always ensured so that you will be able to make informed decisions about your projects.

In the end, our clients are able to benefit from over six decades of extensive planning, surveying, design and construction engineering experience which will be applied to each of your projects. Similarly, the same level of experience is available in securing grants/financing and meeting all regulatory requirements for each of your projects.

LICENSES AND REGISTRATIONS

Texas Board of Professional Engineers and Land Surveyors:

TxEng F-315 & TxSurv F-10028600

Oklahoma State Board of Professional Engineers and Land

Surveyors: #CA 603 PE/LS

Arkansas State Board of Professional Engineers Certificate of

Authorization: #2521

Louisiana Professional Engineering and Land Surveying Board

Professional Engineering Firm License Number: EF6529



SERVICES / PROJECT TYPES

CIVIL ENGINEERING

WATER SYSTEMS:

- Deep Wells & Pump Stations
- Distribution Systems
- Elevated & Ground Storage
- Treatment & Disinfection
- FEMA Floodplain Management

WASTEWATER SYSTEMS:

- Treatment
- Wastewater Permitting
- Gravity Sewer Collection
- Stormwater Permitting
- Water & Wastewater System Evaluations
- Lift Station & Force Mains

HYDRAULICS & HYDROLOGY

PARKS & RECREATION

ROADWAYS, SIDEWALKS & TRAILS

SURVEYING

- GIS/LIS
- Topographic
- Construction
- Land Title
- Easements
- Record Drawings
- Photogrammetric Ground Control
- FEMA
- Boundary
- Improvement
- ALTA
- Platting
- Design

MAPPING - GIS & AUTOCAD BASED

- Municipal, Water Utility, Industrial, Commercial, Private, and Educational Infrastructure
- Topographic
- Master Plans

ENVIRONMENTAL ENGINEERING

- Environmental Reviews and Assessments
- State and Federal Discharge Permitting

PLANNING

- Infrastructure Master Planning
- Site Planning
- Water Conservation Plans

RELATED SERVICES

- Securing Grants and/or Financing
- Bidding & Construction Management
- Record Drawings
- Warranty Review

Our Core Team

Mike Donnan is a licensed professional engineer and holds a Bachelor of Science Degree in Civil Engineering from the Virginia Military Institute. Since joining Hayter Engineering in 1983, Mike has gained experience in all facets of municipal and water utility infrastructure. As President, Mike serves as the firm's manager in the areas of business development, staff recruitment, business operations, and financial operations. Prior to his association with Hayter Engineering, he served as an officer in the U.S. Army Corps of Engineers. He is active in both his civic and professional communities, serving as the President of the Board of Directors of Paris Transitional Housing and with memberships in the National and Texas Society of Professional Engineers, the American Society of Civil Engineers, and Water Environment Federation.

Mike Tibbets is Vice President of Hayter Engineering. In his role as Vice President, Mike serves as Senior Project Manager. Mike is also responsible for the firm's staff development and training. Since joining Hayter Engineering in 1989, Mike has developed a high level of experience in all phases of municipal and water utility infrastructure with a particular expertise in water treatment process evaluation. Prior to that time he had served as a Staff Engineer with the City of Paris and as a Research Assistant with the Texas Water Resources Institute. As a licensed engineer, Mike holds both a Master of Science in Civil Engineering and a Bachelor of Science in Civil Engineer from Texas A & M University. He has authored numerous publications, one of these being:

"Converting a Problem into an Opportunity: Achieving Compliance While Saving Money," TRWA (Texas Rural Water Association) QUENCH Magazine, July/August 2019

Kevin Whitley serves as a principal of Hayter Engineering, and is the firm's Survey Manager. Kevin joined Hayter Engineering in 1999, and has a Bachelor of Science from Stephen F. Austin State University. Kevin has been a registered professional land surveyor for the state of Texas since 2006, and a professional land surveyor for the state of Oklahoma since 2014. As Survey Manager Kevin is responsible for all Hayter Engineering surveying services including all surveying relating to the firm's engineering projects and the wide range of surveying services performed for commercial, industrial and individual property owners.



Michael J. Donnan, P.E.
President



Michael N. Tibbets, P.E.
Vice President



Kevin K. Whitley, R.P.L.S.
Principal / Survey
Manager

Chris Donnan is a licensed professional engineer in Texas, Oklahoma, Arkansas, and Louisiana. He holds a Bachelor of Science Degree in Civil Engineering from Texas A&M University, and a Master of Science Degree in Water Resources from Texas A&M University. Chris is also a Certified Floodplain Manager. Chris has extensive experience in public works planning, design and quality management, with expertise in the areas of hydrology, hydraulics, floodplain management, and geographic information systems (GIS). His experience involves working for several local, state, and regional entities. After 6 years with AECOM and 1½ years with Harrison, Walker & Harper, Chris joined Hayter Engineering in 2015 and became a principal in 2018.

Tyler Creamer is a licensed professional engineer in Texas, Oklahoma, Arkansas, and Louisiana. He holds a Bachelor of Science Degree in Civil Engineering from the University of Texas at Arlington. Tyler joined Hayter Engineering in 2009. He was promoted to Project Manager in 2016 and became a Principal in 2018. Since joining Hayter Engineering Tyler has gained significant experience in water and wastewater design, water and wastewater planning, water quality testing, sidewalks, pedestrian and bicycling trail design, and construction review for a broad cross-section of civil works.

Kevin Vanhoozier is a licensed professional engineer in Texas, Oklahoma, Arkansas, and Louisiana. He holds a Bachelor of Science Degree in Civil Engineering from the University of Texas at Arlington. Kevin joined Hayter Engineering in 2013. Kevin's experience includes water and wastewater facility projects, streets and drainage projects, and construction review as a Design Engineer his first 3 years at Hayter Engineering and was promoted to Project Engineer in 2017 where he continued to gain experience in these same areas but also has worked in the areas of water pump stations, lift stations, planning, water modeling, and permitting. Based on his substantial project experience and management skills he developed, Kevin was promoted to Project Manager in 2019.



**Christopher M. Donnan,
P.E., CFM**
**Principal / Project
Manager**



Tyler C. Creamer, P.E.
**Principal / Project
Manager**



Kevin R. Vanhoozier, P.E.
Project Manager

Municipal Infrastructure Engineering & Surveying Experience

The experience descriptions provided on the following pages are intended to provide the major infrastructure areas that Hayter Engineering has significant experience.



Water Wells



Water Distribution



Water Storage Facilities



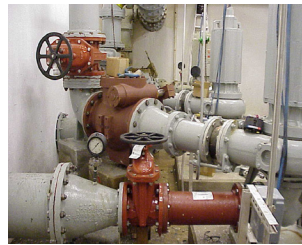
Water Pump Stations



Water Treatment Plants



Wastewater Collection



Wastewater Lift Stations



Wastewater Treatment Plants



Streets and Roadways



Stormwater



Sidewalks and Lighting



Parks and Recreation



Planning



Geographic Information System (GIS)



Floodplain Management, Studies, & Mapping



Permit Assistance



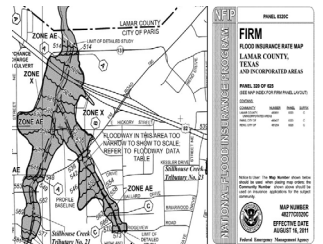
Public / Office Buildings



Surveying Services - Design



Surveying Services - Construction Layout



Surveying Services - FEMA

Water Wells



Water wells are the sole source of water supply for many rural water utilities and municipalities.

Whether you are replacing an obsolete well or adding a new well to obtain additional water capacity, Hayter Engineering understands the importance of your wells to your customers.

Achieving safe, adequate supplies of water begins with proper planning to make sure the required well capacity is available as your demand increases. Planning requires a thorough understanding of the aquifer characteristics, including chemical constituents, geology and potential water volume. Efficient well design requires anticipating your future supply needs, attention to environmental issues, energy efficiency, a suitable budget, a commitment to high quality design, and timely completion of the project.

Hayter Engineering will design your well as an integral component of your overall water system with respect to storage, disinfection, and distribution.

Hayter Engineering has extensive experience with not only well design but also with all phases of a water well project from application for finance, test well, final well construction, to the completed well driller's report to the state.

SERVICES OFFERED:

Application for Finance
Site Acquisition
Boundary and Topographic Surveys
Permitting
Environmental Clearances
Grant Applications
Civil Design
Construction Bidding
Construction Review

PROJECTS PERFORMED:

- Campbell WSC, Texas - Deep Well #5
- Golden WSC, Texas - Deep Water Well #6, #7 & #8
- Red River County WSC, Texas - Deep Well - FM 911 South
- Hickory Creek SUD - Deep Well
- Lake Fork WSC - Deep Well #4
- Bright Star-Salem SUD - Well #6 & Lynn Well #9
- Sharon WSC - Well #4
- City of Alba, Texas - Deep Water Well & Farrington Street Deep Well
- City of Bells - Deep Well
- City of Bogata, Texas - Deep Well #7
- City of Savoy - Deep Well
- City of Tioga, Texas - Deep Well #4
- City of Trenton - Deep Well
- City of Wolfe City, Texas - Deep Well #2
- City of Yantis - Deep Well #6

Water Distribution



Water distribution systems are essential to delivering safe drinking water to your customers, providing fire protection, and providing water to commercial and industrial businesses. Adequate water pressure is required to meet public health requirements and State standards. These goals can be met with a water system plan that models hydraulic demand in the system, and a design that maximizes benefit to current and future customers while also considering existing utilities, required easements, and the effect on nearby customers.

We can assist you with thorough planning and design of your water distribution system. We provide quality design that reflects environmental considerations and cost effectiveness.

During construction, your project deserves careful, independent construction review. Hayter Engineering can provide all required construction related services including job site review, construction administration, material testing, record drawings and warranty review.

All of these services combine to ensure you get the high quality product your community or business deserves.

SERVICES OFFERED:

Financial Application
Preliminary Engineering Report
Environmental Assessments
Surveying
Cost Estimating
Civil Design
Construction Bid & Award
Construction Review
Record Drawings

PROJECTS PERFORMED:

36" raw water transmission main, City of Paris, Texas.

14" Transmission main from the City of Paris to Daisy Farms; 20" raw water main from Nextera Energy to Daisy Farms

36" raw water transmission main for Lamar Energy Center, Paris, Texas.

WATER LINE IMPROVEMENTS FOR THE CITIES OF:

- | | |
|-----------------|---------------|
| • Alba | • Greenville |
| • Arp | • Howe |
| • Avery | • Malakoff |
| • Blossom | • Paris |
| • Bogata | • Point |
| • Bonham | • Reno |
| • Commerce | • Roxton |
| • Cooper | • Star Harbor |
| • DeKalb | • Terrell |
| • Deport | • Tioga |
| • Detroit | • Trenton |
| • East Tawakoni | • Trinidad |
| • Edgewood | • Winnsboro |
| • Emory | • Whitesboro |
| • Farmersville | |

WATER LINE IMPROVEMENTS FOR:

- 410 WSC
- Bright Star-Salem SUD
- Campbell WSC
- Delta County MUD
- Gafford Chapel WSC
- Golden WSC
- Hickory Creek SUD
- Lamar County WSD
- Red River County WSC
- Shady Grove WSC

Water Storage Facilities



Water is an increasingly scarce commodity. Your water system should be designed to provide appropriate water pressure, adequate supplies of treated water, and water storage which meets State standards for potable water providers.

Hayter Engineering has designed hundreds of storage/pressure sources including legged and single pedestal elevated tanks, all welded and bolted steel ground storage tanks, all welded steel standpipes and hydro-pneumatic pressure tanks. All such designs require thorough planning for current and future customers, attention to environmental issues, energy efficiency, a suitable budget, a commitment to high quality design, and timely completion of your project.

SERVICES OFFERED:

Site Acquisition
Boundary and Topographic Surveys
Permitting
Environmental Clearances
Grant Applications
Civil Design
Construction Bidding
Construction Review

PROJECTS PERFORMED:

WATER STORAGE FACILITIES FOR:

- Arp
- Blossom
- Bogata
- Bonham
- Commerce
- Cooper
- Detroit
- East Tawakoni
- Edgewood
- Emory
- Farmersville
- Josephine
- Malakoff
- Paris
- Point
- Quitman
- Reno
- Tioga
- Trinidad
- Windom
- Yantis
- 410 WSC
- Campbell WSC
- Bright-Star Salem SUD
- Delta County MUD
- Fruitvale WSC
- Gafford Chapel WSC
- Golden WSC
- Hickory Creek SUD
- Lake Fork WSC
- Lamar County WSD
- MJC WSC
- Nevada WSC
- Red River County WSC
- Shady Grove WSC
- Sharon WSC
- South Franklin WSC

Pump Stations



Water availability is key to meeting customer usage demands. Having the proper pumping facilities is essential in meeting those demands. These pump stations must meet the State design criteria and any special requirements of your system. Their design must consider the water source as well as the pumping endpoint. Green designs using SCADA, variable frequency drives, and other energy design features are an important consideration. Throughout this process, consideration needs to be given to the future growth of the system being served.

Hayter Engineering has a broad range of design experience with pump stations for transferring water from treatment facilities or wells to the distribution system. These designs are often coupled with the need for and design of pressure sources such as elevated tanks, standpipes or hydro-pneumatic tanks.

During construction, your project deserves careful, independent construction review. Hayter Engineering can provide all required construction related services including job site review, construction administration, material testing, record drawings and warranty review.

SERVICES OFFERED:

- Site Acquisition
- Boundary and Topographic Surveys
- Permitting
- Environmental Clearances
- Grant Applications
- Civil Design
- Construction Bidding
- Construction Review

PROJECTS PERFORMED:

- Bowie County, TX - Oak Grove Pump Station
- Brashear WSC, Brashear, TX - Booster Pump Station
- Bright Star-Salem SUD, Alba, TX - Booster Pump Station Rehabilitation and Upgrade
- Delta County MUD, Cooper, TX - Urgent Need FM 64 BPS
- Gafford Chapel WSC, Sulphur Springs, TX - Pump Station Renovation
- Golden WSC, Golden, TX - BPS
- Lamar County WSD, Brookston, TX - Western System BPS, Blossom BPS, Key West BPS, Givens BPS, Lake Crook BPS, and Tigertown BPS
- Nevada WSC, Nevada, TX - Booster Pump Stations and Ground Storage Piping
- Shady Grove WSC, Greenville, TX - Booster Pump Station
- City of Bonham, TX - High Service Booster Pump Station
- City of Emory, TX - Booster Pump Station
- City of Paris, TX - Booster Pump Station
- City of Wolfe City, TX - WTP Expansion and New High Service Booster Pump Station

Water Treatment Plants



Water is our most precious resource. High quality treated water is essential to public health and safety. Water treatment plants must meet stringent State standards for water quality and quantity; and can be expensive to operate and maintain. Increasingly more complex technology is required to allow treatment facilities to meet standards; and minimize energy and other operational costs.

Hayter Engineering has decades of experience evaluating and trouble shooting water treatment facilities and their operation. This expertise will be applied to each specific facility designed and all operational features for your plant. Where appropriate, all facilities will be designed for ease of future expansion. Additionally, we will look for opportunities to expand and/or rehabilitate existing facilities where feasible to reduce the project cost.

During construction, your project deserves careful, independent construction review. Hayter Engineering can provide all required construction related services including job site review, construction administration, material testing, record drawings and warranty review.

SERVICES OFFERED:

Water Treatment Plant Design
Renovations & innovative Technology
Environmental Assessment
Design Surveys
Financial Planning Assistance
Construction Bid & Award
Construction Review
Handicapped Accessibility Review
Permit Assistance

PROJECTS PERFORMED:

WATER TREATMENT PLANT IMPROVEMENTS FOR:

- City of Bonham, Texas
- City of Commerce, Texas
- City of Cooper, Texas
- City of Detroit, Texas
- City of Edgewood, Texas
- City of Emory, Texas
- City of Kemp, Texas
- City of Lone Oak, Texas
- City of Malakoff, Texas
- City of Point, Texas
- City of Star Harbor, Texas
- City of Sulphur Springs, Texas
- City of Trinidad, Texas
- City of Wills Point, Texas
- Cypress Springs SUD

Wastewater Collection



Wastewater collection mains must collect and deliver wastewater to your treatment plant without excessive infiltration/inflow of ground and storm waters. Lift stations must be properly designed for efficient management of wastewater flows. Appropriate planning, including flow monitoring, smoking and television testing of mains and proper design for area soils and other factors, are necessary for quality construction.

We can assist you with thorough planning of your wastewater system needs, construction, lift stations, obtaining easements and other permits. We provide quality designs that reflect environmental considerations and cost effectiveness.

During construction, your project deserves careful, independent construction review. Hayter Engineering can provide all required construction related services including job site review, construction administration, material testing, record drawings and warranty review.

All of these services combine to ensure you get the high quality product your community or business deserves.

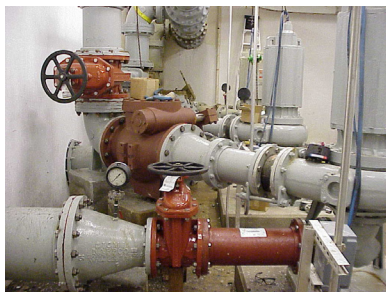
SERVICES OFFERED:

Application for Finance
Preliminary Engineering Report
Environmental Assessments
Surveying
Cost Estimating
Civil Design
Construction Bid & Award
Construction Review
Record Drawings

PROJECTS PERFORMED:

- Annona, TX
- Arp, TX
- Blossom, TX
- Bonham, TX
- Commerce, TX
- Cooper, TX
- De Kalb, TX
- Deport, TX
- Detroit, TX
- Edgewood, TX
- Emory, TX
- Grand Saline, TX
- Howe, TX
- Malakoff, TX
- Paris, TX
- Pecan Gap, TX
- Point, TX
- Reno, TX
- Roxton, TX
- Terrell, TX
- Tioga, TX
- Trenton, TX
- Trinidad, TX
- Wills Point, TX
- Winnsboro, TX
- Wolfe City, TX

Wastewater Lift Stations



Wastewater lift stations are a critical element in a collection system. Proper planning for current and future capacities is a must. Design features have to be developed to meet the needs of each installation ensuring quality construction, required functions and controls, and trouble-free operation.

Hayter Engineering has designed and rehabilitated hundreds of lift stations throughout its 60 year history. We can assist you with thorough planning of lift station design or rehabilitation. We provide quality designs that reflect environmental considerations and cost effectiveness.

During construction, your project deserves careful, independent construction review. Hayter Engineering can provide all required construction related services including job site review, construction administration, material testing, record drawings and warranty review.

All of these services combine to ensure you get the high quality product your community deserves.

SERVICES OFFERED:

- Site Acquisition
- Boundary and Topographic Surveys
- Permitting
- Environmental Clearances
- Grant Applications
- Civil Design
- Construction Bidding
- Construction Review

PROJECTS PERFORMED:

- Alba-Golden ISD, Alba, TX - High School Lift Station Discharge
- Arp, TX - Wastewater Collection Lines & Lift Station
- Avery, TX - South Lift Station, and WWTP Master Lift Station
- Bonham, TX - North Lift Station & South Lift Station
- Commerce, TX - WWTP Master Lift Station Pump Replacement, Replacement Lift Station & Line Rehabilitation, and Master Lift Station Valve Replacement
- Cooper, TX - WWTP Master Lift Station
- Detroit, TX - WWTP Master Lift Station Replacement
- East Tawakoni - Rehabilitation of 9 Lift Stations
- Emory, TX - Katy Lift Station & Force Main; Highway 69 Lift Station & Force Main; Brookshires area Lift Station & Force Main, and WWTP Master Lift Station
- Malakoff, TX - Master Lift Station Rehabilitation
- Paris, TX - SE Lift Station Analysis
- Reno, TX - New Lift Station
- Star Harbor, Makakoff, TX - Lift Station Renovations
- Trenton, TX - W Sanders Street Lift Station, Highway 69 Lift Station, S Pearl Street Lift Station, and High School Lift Station
- Widom, TX - FM 1743 N. LS
- Winfield, TX - Lift Station Rehabilitation
- Wolfe City, TX - Wylie St. Lift Station

Wastewater Treatment Plants



Water is our most precious resource. High quality treated water is essential to public health and safety. Wastewater treatment plants must meet stringent State standards for water quality and quantity, and can be expensive to operate and maintain. Increasingly more complex technology is required to allow treatment facilities to meet standards, and minimize energy and other operational costs.

Caring for the environment is critical in our modern world. Wastewater treatment plants must produce clean water in an energy efficient, cost effective manner. Ease of operation and compliance with regulatory authorities are both required as well.

Hayter Engineering has extensive familiarity with wastewater treatment plant planning, design, permitting and construction. Our experience allows us to design plants that are environmentally friendly, energy efficient, easier to operate and maintain, and which produce the high quality treated water your community requires.

During construction, your project deserves careful, independent construction review. Hayter Engineering can provide all required construction related services including job site review, construction administration, material testing, record drawings and warranty review.

SERVICES OFFERED:

Wastewater Treatment Plant Design
Renovations & innovative Technology

Environmental Assessment

Design Surveys

Financial Planning Assistance

Construction Bid & Award

Construction Review

Handicapped Accessibility Review

Permit Assistance

PROJECTS LOCATIONS:

- Annona
- Arp
- Avery
- Bailey
- Bonham
- Commerce
- Cooper
- De Kalb
- Deport
- Detroit
- East Tawakoni
- Edgewood
- Emory
- Fairfield
- Ladonia
- Paris
- Pecan Gap
- Point
- Reno
- Roxton
- Tioga
- Trenton
- Winnsboro

Streets and Roadways



Roadways are investments that frame the streetscape in your community. Aesthetics, environment, function and capacity are integral parts of a successful roadway project. Appropriate design maximizes your investment in your roadway infrastructure.

Quality roadway projects require expert planning for present and future uses, attention to soil conditions, a design that encourages longevity, and a commitment to completion of construction on time and within budget.

Hayter Engineering can assist you beginning with planning through the design of your roadways. We provide quality design that reflects existing conditions and future needs. Construction review services are available to ensure a high quality project for your citizens.

During construction, your project deserves careful, independent construction review. Hayter Engineering can provide all required construction related services including job site review, construction administration, material testing, record drawings and warranty review.

SERVICES OFFERED:

Grant Applications
Master Drainage Plans
Master Street Plans
Environmental Clearances
Permitting
Right-of-Way Surveys
Civil Design
Construction Bid & Award
Construction Review
Warranty Review

PROJECTS LOCATIONS:

- Street Improvements:

Arp	Greenville Board of Development
Avery	Paris
Bonham	Reno
Clarksville	Roxton
Commerce	Trenton
Cooper	Trinidad
De Kalb	Trinidad Economic Development Corporation
Deport	Van Alstyne
Detroit	Winnsboro
Edgewood	
Fairfield	

- KLZ Stone Supply Infrastructure, Commerce, Texas - Marble Way & Granite Run
- Hydro Aluminum, Commerce, Texas - Economic Drive
- Schlumberger Way (Pecan Street Extension), Bonham, TX
- South Collegiate Drive Reconstruction, Paris, TX
- Stillhouse Road Widening, Paris, TX
- Hearne Street Extension, Paris, TX

Stormwater



Water is a vital resource as well as a powerful force of nature. Hayter Engineering's stormwater experts work with our clients to solve their problems and meet their needs associated with the management and control of stormwater runoff. With years of experience in hydrology, hydraulics, and stormwater management we can provide our clients with strategies and facilities that control and manage stormwater runoff. Our services begin with planning and preliminary engineering, extending through design and construction review with a focus on the development of feasible and cost effective solutions.

Public and private clients alike rely on Hayter Engineering's expert storm-water related services. These services focus on the development of structural and non-structure measures to protect human life and reduce flood safety risks, prevent damage to public and private property, minimize the disruption of your citizen's activities caused by stormwater runoff, and protect water quality.

Hayter Engineering has performed numerous projects for municipalities, developers, commercial clients, and private citizens and will cover your permitting, planning, design, and construction needs for stormwater-related projects.

SERVICES

- Watershed Analysis
- Storm Sewer Design
- Master Planning
- Funding
- Open Channel Analysis & Design
- Culvert/Bridge Analysis & Design
- Detention/Retention Pond Analysis & Design
- Stormwater Pollution Prevention Plans
- Permitting
- Stream Assessment
- Erosion Control/Streambank Stabilization

STORMWATER MODELING

- HEC-HMS & HEC-RAS
- XP-SWMM
- EPA-SWMM, EPA-SWMM
- HY-8

PROJECTS

- **Stormwater Analysis & Design:** Liberty National Bank, Paris, TX; Chisum ISD; Paris ISD; South Village Development, Shady Shores Senior Living Development, Bonham, TX
- **Master Drainage Plan:** Paris; Commerce
- **Channel Design:** Johnson Woods, 24th Street, Paris, TX; Cooper to Culver Street, Commerce, TX
- **Drainage:** Charity Road, Commerce, TX; Majors Field, L3 Communications, Greenville, TX;
- **Culvert Analysis & Design:** Hendrix Ranch; Island Bayou & Main Street, Bonham, TX; Pig Branch, Bonham, TX; Holiday Inn Express, Bonham, TX
- **Detention Analysis & Design:** Liberty National Bank, Paris, TX; Physicians Choice, Dialysis Center, Paris, TX; Shady Shores Senior Living Development, South Village Development, Bonham, TX; Chisum ISD; Paris ISD; Southern MultiFoods, Taco Bell, Paris, TX
- **Stormwater Permitting:** Airports : Paris, Bonham, Commerce; WWTP: Commerce, Bonham; Industry: Paris Iron & Metals, Paris, TX

Sidewalks and Lighting



Sidewalks and lighting create aesthetic, functional, safe/ADA compliant and much needed pedestrian access for your community. Sidewalks and lighting serve existing businesses as well as to welcome new business ventures. Appropriate design maximizes your investment in your community.

Quality sidewalk and lighting projects require expert planning for present and future uses, attention to the needs of the community, a design that encourages longevity, and a commitment to completion of construction on time and within budget.

Hayter Engineering can assist you with possible financial opportunities and thorough planning for your sidewalk and lighting needs. We provide quality design that reflects existing conditions and future needs.

During construction, your project deserves careful, independent construction review. Hayter Engineering can provide all required construction related services including job site review, construction administration, material testing, record drawings and warranty review.

SERVICES OFFERED:

Grant Applications
Environmental Clearances
Permitting
Right-of-Way Surveys
Civil Design
Construction Bid & Award
Construction Review

PROJECTS PERFORMED:

- SH 37 & FM 515 Sidewalks - Winnsboro, TX
- Northern Sidewalks & Southern Sidewalks - Edgewood, TX
- Live Oak & Maple Street Sidewalks - Commerce, TX
- North & Texas Street Sidewalks - Emory, TX
- Downtown Sidewalks - Quinlan, TX
- Downtown Sidewalks - Naples, TX
- Alamo Street Sidewalks - Commerce, TX
- Safe Routes to Schools – Paris, TX
- Sidewalk Reconstruction - Commerce, TX
- Downtown Streetscape – Paris, TX
- Heritage District & Main Street – Bonham, TX & Bonham Economic Development Corporation
- Heritage Square Sidewalk Reconstruction – Cooper, TX
- Heritage Park sidewalks, paving and drainage, Paris, TX
- Downtown Sidewalks – Paris, TX
- Clarksville Street Sidewalks – Paris, TX
- Bonham Street Sidewalk Replacement – Paris, TX
- Texas A&M-Commerce Sidewalks – Commerce, TX
- City Hall Lot Landscaping & Sidewalks – Commerce, TX

Parks and Recreation



Quality community development projects—parks, athletic complexes, activity centers, hike and bike trails, sidewalks, and more—require an understanding of who will use the project, and what they expect.

Quality community developments also require a commitment to aesthetics, appropriate design and completion of the project on time and within budget.

For more than 60 years, Hayter Engineering has assisted communities in obtaining well designed, attractive and appropriate parks, recreational and community use facilities.

Our team of professional planners and engineers will work with you to achieve a project which fits harmoniously into the area, with attention to the environment, project budget and time schedule.

SERVICES OFFERED:

Master Planning
Environmental Review
Grant applications
Site Planning
Civil Design Services
Construction Bidding
Construction Review

PROJECTS PERFORMED:

- Centennial Park, Commerce, TX
- Big Creek Lake Boat Ramp, Cooper, TX
- Lake Crook Fishing Pier - Lamar County, TX
- Mary King Park Site Improvements Lake Cypress Springs, Franklin County, TX
- Edgewood City Park - Edgewood, TX
- Recreational Trails:
 - Trail de Paris (6 projects)
 - Reno Rail Trail (2 projects)
 - Prairiland Trail (3 projects)
 - Blossom Trail (1 project)
 - Chaparral Rail Trail (3 projects)
 - Red River County Trail (2 projects)
- DeMorse House - Clarksville, TX
- Lake Bob Sandlin Boat Ramp - Mt. Pleasant, TX
- Harmon Park & Big Creek Boat Ramp - Cooper, TX
- Soccer Fields - Bonham, TX
- Park Restroom - Commerce, TX
- Walleye Park Restrooms - Franklin County, TX
- Kiwanis Park - Reno, TX
- City Park Improvements - Trenton, TX
- Bonham Lake RV Park - Bonham, TX
- Morning Glory Fish Screen Renovation, Franklin County, TX

Planning



Planning is a broad topic. Plans may include comprehensive community plans which include population growth, land use/zoning, housing, streets, drainage, thoroughfares, recreation and open space, wastewater, water, zoning, and capital improvements. This type plan is more general in nature, and is intended to gather support for the direction your community will take over the next 5, 10 and 20 years. Other plans are more specific in nature, and may cover a single infrastructure type, emergency planning, drought preparedness, and many other types of plans.

We have extensive experience in comprehensive broad based type planning as well as very specific detailed planning for specific needs. Thorough planning is essential for obtaining the high quality future results your community deserves.

SERVICES OFFERED:

- Comprehensive Master Plans
- Thoroughfare Plans
- Master Drainage Plans
- Master Street Plans
- Open Space Plans
- Dam Safety Emergency Action Plans
- Site Plans
- Water Conservation Plans
- Drought Contingency Plans
- Stormwater Pollution Prevention Plans
- Water Reuse Plans
- Risk Management Plans
- Industrial Pretreatment Plans
- Monitoring Plans

PROJECTS PERFORMED:

- Master Plan, Cooper, TX
- Master Plan, DeKalb, TX
- Master Plan, East Tawakoni, TX
- Master Plan, Point, TX
- Master Plan, Trenton, TX
- Master Plan, Trinidad, TX
- Master Plan, Golden WSC, Alba, TX - 1998 and 2011
- Master Plan, Bright Star-Salem SUD, Alba, TX
- Master Plan, Delta County MUD, Cooper, TX
- Master Plan - Oak Grove WSC, Oak Grove, TX
- Master Drainage Plan, Commerce, TX
- Master Drainage Plan, Paris, TX
- Comprehensive Plan - Stormwater Drainage, Bonham, TX
- Master Drainage Plan, DeKalb, TX
- Master Drainage Plan, Stillhouse Estates, Paris, TX
- Master Drainage Plan, Reno, TX
- Master Drainage Plan, Edgewood, TX
- Master Drainage Plan, Oak Creek Addition, Paris, TX

Geographic Information Systems (GIS)



Your organization manages a wide range of data - from water, wastewater, drainage and other infrastructure, to land use, zoning, city limits, emergency services, tax records, property identifiers, work orders, citizen service requests, Police mapping, and more. Imagine being able to view and obtain details on all of these diverse data records, using your office computer or a laptop, or through a Web based browser, accessing multiple computer based data files and current, detailed aerals of your community. This is GIS - Geographic Information Systems - Hayter Engineering's expert GIS personnel can develop this for your organization.

Our surveyors and GIS personnel can update your city limits. An accurate, current city limit map can ensure that you are collecting all property taxes due to the City, and billing appropriate utility rates.

Hayter Engineering's survey personnel can assist you in locating (to within 1") items such as water meters, fire hydrants, valves, manholes, cleanouts, etc. Once located we can create and structure a detailed GIS system for your needs, using highly accurate aerals, and detailed system maps which link to all of the necessary data you need—fire flows, hydrant data, sewer line and service information, zoning and ordinance background, tax records, utility billing records, and more—all linked to a particular property or location. We can structure this as a public data base, searchable by your citizens, and separate some parts as municipal access only, according to your wishes.

We have offered a full range of municipal planning services for 60 years, including comprehensive municipal plans, regional plans and project specific plans.

GIS based planning and mapping can greatly enhance administration of the complex and varied needs of your community.

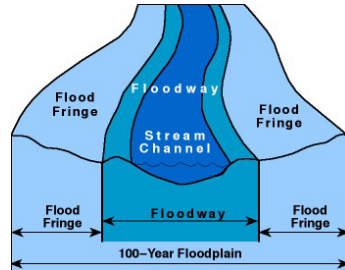
SERVICES OFFERED:

Water & Wastewater Systems Mapping
Drainage Maps
Base Mapping
Parcel Maps
New City Limit Maps
Subdivision Water & Wastewater Systems Mapping
Registered Sex Offender and Sex Offender Free Zones
Zoning Maps
Flood Plain Mapping
CCN Maps
Real-time work order mapping

PROJECTS PERFORMED:

- Water & Wastewater Systems, Subdivision Water & Sewer Update, Floodplain, Streets, Lots, Aerials, City of Reno, TX
- Police Department, City of Reno, TX
- Water & Wastewater Systems, Grand Saline, TX
- Comprehensive Plan, City of Cooper, TX
- Comprehensive Plan, City of Trinidad, TX
- Smoke Testing Map Annual Updates, City of Sherman, TX
- Water & Wastewater Systems, Parcels, CCN, City of Bonham, TX
- Water System, City of Blossom, TX
- Police Department, City of Commerce, TX
- Police Department, City of Tioga, TX
- Texas A & M University - Commerce Walking Track, Commerce, TX
- Trail de Paris Master Plan, Paris, TX
- Smoke Testing Map, Whitesboro, TX
- Water & Wastewater Systems, Riverbend WRD (Red River Army Depot, New Boston, TX)
- Water System, Lamar County WSD

Floodplain Management, Studies & Mapping



Flooding poses a risk to the safety and property of every community making floodplain management a critical component to the safety and security for the property of your citizens. Floodplain management and mitigation programs help communities identify their flooding risks and implement corrective and preventative measures to minimize flood damage. Any development within a designated FEMA floodplain cannot move forward until all pertinent floodplain ordinances have been satisfied.

Hayter Engineering's experienced staff offers a wide range of services including FEMA map revisions, flood insurance (FIS) studies, floodplain mapping, watershed planning, planning and implementation of mitigation measures, and the development of community ordinances.

As a result of our years of experience and understanding of local, state, and federal requirements, whether you are dealing with a single property or an entire watershed, Hayter Engineering can help your projects stay in compliance while moving forward to completion as timely and cost effectively as possible.

SERVICES:

- FEMA map revisions
- Flood Insurance Studies
- Floodplain Mapping
- Watershed Planning
- Mitigation Measures
- Community Ordinances
- Public Safety

HYDROLOGY & HYDRAULIC SERVICES:

- HEC-HMS
- HEC-RAS
- HEC-GeoRAS
- HEC-1
- HEC-2
- HY-8

PROJECTS PERFORMED:

- City of Paris, TX - Johnson Woods Drainage Improvements Flood Study and LOMR
- City of Paris, TX - 24th Street Channel Design
- James Claiborn - Property Floodplain Determination
- City of Reno, TX - Turtle Creek Subdivision Floodplain Mapping
- Alpha Lake Limited (Stalworth Real Estate Services) - Mirabeau Square Channel Relocation (Paris Towne Center), Paris, TX
- City of Bonham, TX - Pig Branch Watershed Analysis
- City of Bonham, TX - Main Street and Island Bayour Culvert Analysis
- Shady Shores Development, Floodplain Determination, Bonham, TX

Permit Assistance



Your permitting requirements need a timely and complete application, based upon a thorough understanding of both State and Federal regulations, and your specific infrastructure.

Hayter Engineering has a detailed knowledge of permit regulations, and will work closely with you to complete the permitting process in a timely and efficient manner.

Hayter Engineering has provided permit assistance to the Cities of:

- Alba
- Arp
- Avery
- Bailey
- Blossom
- Bogata
- Bonham
- Commerce
- Cooper
- DeKalb
- Deport
- Detroit
- East Tawakoni
- Edgewood
- Emory
- Fairfield
- Kemp
- Malakoff
- Mallard Point
- Paris
- Pecan Gap
- Point
- Quinlan
- Reno
- Roxton
- Star Harbor
- Sun Valley
- Tioga
- Trenton
- Trinidad
- Van Alstyne
- West Tawakoni
- Wills Point
- Windom
- Winnsboro

Permit assistance has also been provided to:

- Delta County MUD
- Franklin County WD
- Lamar County WSD
- Petty WSC
- Randolph WSC
- Shalimar Ft Worth LP
- Prairiland ISD
- Rivercrest ISD
- Sundown Ranch
- Pleasant Oaks MHP

CCN applications and/or amendments have been performed for:

- Bonham
- East Tawakoni
- DeKalb
- Cash SUD
- Lamar County WSD

SERVICES OFFERED:

- Wastewater Discharge Permits
- Stormwater Pollution Prevention Plans
- Permit Amendment Applications
- Lagoon Discharge Permits & Lagoon Closure Permits
- Well Permits
- Sludge Permits
- Reservoir 404 Corps of Engineers Permits
- Water Use Permits
- Private Sewer Discharge Permits
- CCN (Certificate of Convenience and Necessity) Applications and Amendments

Public / Office Buildings



The public buildings in your community reflect your commitment to the future and to municipal service. Careful planning is essential to develop an aesthetically pleasing site that will maximize the public use of the facility.

Your public building also requires environmental approvals and thorough, complete civil design and construction specifications for grading, paving, drainage, water and wastewater service.

During construction, your project deserves careful, independent construction review. Hayter Engineering can provide all required construction related services including job site review, construction administration, material testing, record drawings and warranty review.

For more than 60 years, Hayter Engineering has assisted municipalities and private entities in obtaining well designed, attractive, functional and cost-effective public building facilities.

Our group of professional planners, surveyors and engineers will work closely with you to achieve projects which fit your budget and schedule, and which incorporate quality design.

SERVICES OFFERED:

Environmental Site Assessment
Boundary Surveying
Platting
Site Planning
Civil Engineering Design
Construction Bid & Award
Construction Phase Engineering

PROJECTS PERFORMED:

- Lamar County Water Supply District, Office Building, Brookston, TX
- Storm Shelter, Point, TX
- Storm Shelter, East Tawakoni, TX
- Santa Fe Depot, Paris, TX
- New City Hall, Bonham, TX
- Storm Shelter, Avery, TX
- Storm Shelter, De Kalb, TX
- Kelso Technologies Building, Bonham, TX
- Site Plant Layout - Covenant Christian Church, Paris, TX
- Recreational Classroom Facility, First Baptist Church, Bonham, TX
- Fire Station, Reno, TX
- Animal Shelter, Commerce, TX
- City Park Restroom, Commerce, TX
- Mary King Park Restroom Facility, Lake Bob Sandlin State Park, Titus County, TX

Surveying Services - Design



Hayter Engineering offers a wide variety of survey related services to meet all of your survey needs. We have completed over 1,000's of topographic design surveys for public and private clients. We also offer boundary surveys for property transactions, construction staking for new and existing facilities improvements, master plats for proposed developments, and surveys for many other purposes.

DESIGN SURVEYS INCLUDE:

Topographic Surveys for Infrastructure Design for Rural Water Systems:

- 410 WSC
- Bright Star-Salem SUD
- Campbell WSC
- Central Bowie County WSC
- Delta County MUD
- Franklin County WD
- Gafford Chapel WSC
- Golden WSC
- Lamar County WSD
- Oak Grove WSC
- Red River County WSC
- Shady Grove WSC

Topographic Surveys for Infrastructure Design in the Cities of:

- Alba
- Annona
- Avery
- Blossom
- Bonham
- Bowie
- Commerce
- Cooper
- De Kalb
- Deport
- Detroit
- East Tawakoni
- Edgewood
- Emory
- Fairfield
- Grand Saline
- Greenville
- Howe
- Malakoff
- Miller's Cove
- Paris
- Point
- Quinlan
- Reno
- Roxton
- Terrell
- Tioga
- Trenton
- Trinidad
- Whitesboro
- Whitewright
- Wills Point
- Windom
- Winnsboro
- Wolfe City
- Kimberly-Clark Corporation, Paris, Texas
- Kings Inn, Paris, Texas
- Lamar Power Partners/Panda Energy, Paris, Texas
- Daisy Dairy, Paris, Texas
- LaQuinta Inns, Lindale, Allen, and Eules, Texas
- Brentwood Terrace Healthcare and Rehab Center, Paris, Texas
- Educational Facility design surveys for: Paris ISD, North Lamar ISD, Prariland ISD, Chisum ISD, Cooper ISD, Detroit ISD, Clarksville ISD, and Paris Junior College
- Paris Regional Medical Center, Paris, Texas
- Paris Lakes Medical Center, Paris, Texas
- RKMS - Neighbors Emergency Clinic, Paris, Texas
- IHOP, Mt. Pleasant, Texas
- First Federal Bank, Clarksville and Paris, Texas
- Hydro Aluminum Smelting Plant, Commerce, Texas
- Campbell's Soup Corporation, Paris, Texas
- Turner Industries, Paris, Texas
- Southern Multifoods, Paris, Texas
- Potters Industries, Paris, Texas
- Subway, Paris, Texas
- Paris Towne Center, Paris, Texas
- Lamar Industrial, Mt. Pleasant, Texas
- Brownstone Development, Nash, Texas
- Lamar Industrial, Mt. Pleasant, Texas

SERVICES OFFERED:

FEMA Surveys
ALTA & Land Title Surveys
Construction Site & Utility Line Staking
Boundary Surveys
Construction Layout
Easement Surveys
GPS Surveying
Photogrammetric Ground Control
Preliminary & Final Plats
Record Drawing & Improvement Surveys
Topographic Surveys
GIS/LIS Surveys
Design Surveys

FOR MORE INFORMATION CONTACT:

Kevin K. Whitley, R.P.L.S.
Survey Manager
Phone: 903-785-0303
Email: kwhitley@haytereng.com

Survey Services - Construction Layout



Hayter Engineering has been an integral part in many construction layout projects for both public and private clients. Our construction layout projects have ranged in size from one homeowner on a half-acre lot to the 7,000 acre Daisy Dairy Facility where multiple engineers, architects, and construction firms were involved.

CONSTRUCTION LAYOUT SURVEYS INCLUDE:

- City of Paris CIP Water & Sewer Line Replacements
- Daisy Dairy Facility
- City of Commerce WWTP Lagoon Closure
- Lamar Power Partners/Panda Energy 107 acre facility
- Daisy Farms Raw water main 4+ miles
- Paris Lakes Regional Medical Center
- Oak Creek Subdivision Layout
- Sewer line staking for numerous municipalities
- Water line staking for numerous municipalities
- Street layout staking for numerous municipalities
- Several commercial developments including: Holiday Inn Express and Comfort Suites - Paris TX; Brentwood Terrace Healthcare & Rehab Center - Paris TX; LaQuinta Inn - Lindale, Allen & Euless TX; First Federal Bank- Paris and Clarksville TX; IHOP – Mt. Pleasant TX;
- Hydro Aluminum Smelting Plant
- City of Blossom city lake dam rehabilitation

Utilizing GPS as well as conventional survey equipment in the field and AutoCAD and GIS software in the office we can assure you that all of your construction layout requirements can be met. Additionally, at Hayter Engineering we are very familiar with coordinating between engineers, architects, government agencies and contractors to ensure projects stay on schedule.

SERVICES OFFERED:

FEMA Surveys
ALTA & Land Title Surveys
Construction Site & Utility Line Staking
Boundary Surveys
Construction Layout
Easement Surveys
GPS Surveying
Photogrammetric Ground Control
Preliminary & Final Plats
Record Drawing & Improvement Surveys
Topographic Surveys
GIS/LIS Surveys
Design Surveys

FOR MORE INFORMATION CONTACT:

Kevin K. Whitley, R.P.L.S.
Survey Manager
Phone: 903-785-0303
Email: kwhitley@haytereng.com

Surveying Services - FEMA



Hayter Engineering has completed numerous FEMA related surveys for public and private clients. We offer multiple services, including Special Flood Hazard Area Delineation, Elevation Certificates, and Letter of Map Change applications.

FEMA Related Surveys Include:

- T-Shirt Shoppe, Paris, TX - LOMR Application
- Sonic Restaurant, Paris, TX - Elevation Certificate
- Pickering LOMR Application, Paris, TX - for business complex which included Paris Chiropractic, Paris Glam, Peoples Insurance, Cash Max, On Call Home Health, The Vibe Health & Fitness Studio, All Cuts Hair Salon, and Super Tan
- Salzman LOMR-F Application, Paris, TX - for business complex which included Paris Medical Plaza, Primary Care Associates, Digital Mammography, Beautiful Savior Lutheran Church, and Calvary Paris Church
- Lamar Energy Resources, Lamar County, TX - Special Flood Hazard Area Determination & Delineation for multiple properties and easements owned by Lamar Energy Resources.
- Paris Towne Center, Paris, TX - Flood Zone Delineation
- Subway Sandwiches, Paris, TX - FEMA Floodplain Protest, Flood Elevation Delineation
- LOMR Applications for: Multiple Duplex, Singe Family Residence, and Multiple Lot/Parcel
- Elevation Certificates & LOMR Applications for Investment properties and bank-owned properties
- Special Flood Zone Hazard Area Determination and Delineation for multiple subdivisions and additions.

In the field we utilize both conventional surveying equipment and GPS on a Real Time Network allowing us to economically cover a much larger area. In-office we are equipped with AutoCAD and GIS software to handle files provided by FEMA and to expedite the preparation of FEMA applications.

Hayter Engineering is very familiar with coordination efforts between engineers, architects, government agencies and contractors to ensure your project stays on schedule.

SERVICES OFFERED:

FEMA Surveys
ALTA & Land Title Surveys
Construction Site & Utility Line
Staking
Boundary Surveys
Construction Layout
Easement Surveys
GPS Surveying
Photogrammetric Ground Control
Preliminary & Final Plats
Record Drawing & Improvement
Surveys
Topographic Surveys
GIS/LIS Surveys
Design Surveys

FOR MORE INFORMATION CONTACT:

Kevin K. Whitley, R.P.L.S.
Survey Manager
Phone: 903-785-0303
Email: kwhitley@haytereng.com