



Statement of Qualifications

for

Commercial/Industrial Engineering Services



TEXAS • OKLAHOMA • ARKANSAS • LOUISIANA
4445 SE Loop 286 Paris, TX 75460
t 903.785.0303 www.haytereng.com

Firm Overview

Founded in 1957, Hayter Engineering offers our full range of services to private developers, industrial groups, public school districts, colleges, and universities, in Texas, Oklahoma, Arkansas, and Louisiana.

Over many years, Hayter Engineering has teamed with numerous private developers and industrial groups on a wide range of multi-faceted projects. These experiences have developed our ability to be a team leader or a team member, always cooperating towards the ultimate goal of a successful project for our client. These projects have included industrial groups, commercial development, residential developers, educational facilities, public facilities, and water utility offices. Our role in these types of projects has included civil engineering - water, sanitary sewer, stormwater, site grading, parking and roadways; and surveying - boundary, design, construction, and record drawings. A representation of these team efforts is included in this Statement of Qualifications.

Hayter Engineering has developed an extensive range of planning, surveying and engineering services which are applied to a wide variety of project types. A brief summary of these services and project types are listed to the right with more detailed descriptions on the pages to follow.

LICENSES AND REGISTRATIONS

Texas Board of Professional Engineers and Land Surveyors:

TxEng F-315 & TxSurv F-10028600

Oklahoma State Board of Professional Engineers and Land

Surveyors: #CA 603 PE/LS

Arkansas State Board of Professional Engineers Certificate of

Authorization: #2521

Louisiana Professional Engineering and Land Surveying Board

Professional Engineering Firm License Number: EF6529



SERVICES / PROJECT TYPES

CIVIL ENGINEERING

WATER SYSTEMS:

- Treatment & Disinfection
- Deep Wells & Pump Stations
- Distribution Systems
- Elevated & Ground Storage
- Hydraulic Evaluations

WASTEWATER SYSTEMS:

- Treatment
- Gravity Sewer Collection
- Wastewater System Evaluations
- Lift Station & Force Mains
- Wastewater Permitting

STORMWATER SYSTEMS:

- Hydraulics & Hydrology
- FEMA Floodplain Management
- Stormwater Permitting

PARKS & RECREATION

ROADWAYS, SIDEWALKS & TRAILS

SURVEYING

- GIS/LIS
- Topographic
- Construction
- Land Title
- Easements
- Record Drawings
- Photogrammetric Ground Control
- FEMA
- Boundary
- Improvement
- ALTA
- Platting
- Design

MAPPING - GIS & AUTOCAD BASED

- Municipal, Water Utility, Industrial, Commercial, Private, and Educational
- Topographic
- Master Plans

ENVIRONMENTAL ENGINEERING

- Environmental Reviews and Assessments
- State and Federal Discharge Permitting

PLANNING

- Infrastructure Master Planning
- Site Planning
- Water Conservation Plans

RELATED SERVICES

- Securing Grants and/or Financing
- Bidding & Construction Management
- Record Drawings
- Warranty Review



Our Core Team

Mike Donnan is a licensed professional engineer and holds a Bachelor of Science Degree in Civil Engineering from the Virginia Military Institute. Since joining Hayter Engineering in 1983, Mike has gained experience in all facets of municipal and water utility infrastructure. As President, Mike serves as the firm's manager in the areas of business development, staff recruitment, business operations, and financial operations. Prior to his association with Hayter Engineering, he served as an officer in the U.S. Army Corps of Engineers. He is active in both his civic and professional communities, serving as the President of the Board of Directors of Paris Transitional Housing and with memberships in the National and Texas Society of Professional Engineers, the American Society of Civil Engineers, and Water Environment Federation.

Mike Tibbets is Vice President of Hayter Engineering. In his role as Vice President, Mike serves as Senior Project Manager. Mike is also responsible for the firm's staff development and training. Since joining Hayter Engineering in 1989, Mike has developed a high level of experience in all phases of municipal and water utility infrastructure with a particular expertise in water treatment process evaluation. Prior to that time he had served as a Staff Engineer with the City of Paris and as a Research Assistant with the Texas Water Resources Institute. As a licensed engineer, Mike holds both a Master of Science in Civil Engineering and a Bachelor of Science in Civil Engineer from Texas A & M University. He has authored numerous publications, one of these being:

"Converting a Problem into an Opportunity: Achieving Compliance While Saving Money," TRWA (Texas Rural Water Association) QUENCH Magazine, July/August 2019

Kevin Whitley serves as a principal of Hayter Engineering, and is the firm's Survey Manager. Kevin joined Hayter Engineering in 1999, and has a Bachelor of Science from Stephen F. Austin State University. Kevin has been a registered professional land surveyor for the state of Texas since 2006, and a professional land surveyor for the state of Oklahoma since 2014. As Survey Manager Kevin is responsible for all Hayter Engineering surveying services including all surveying relating to the firm's engineering projects and the wide range of surveying services performed for commercial, industrial and individual property owners.



Michael J. Donnan, P.E.
President



Michael N. Tibbets, P.E.
Vice President



Kevin K. Whitley, R.P.L.S.
Principal / Survey Manager

Chris Donnan is a licensed professional engineer in Texas, Oklahoma, Arkansas, and Louisiana. He holds a Bachelor of Science Degree in Civil Engineering from Texas A&M University, and a Master of Science Degree in Water Resources from Texas A&M University. Chris is also a Certified Floodplain Manager. Chris has extensive experience in public works planning, design and quality management, with expertise in the areas of hydrology, hydraulics, floodplain management, and geographic information systems (GIS). His experience involves working for several local, state, and regional entities. After 6 years with AECOM and 1½ years with Harrison, Walker & Harper, Chris joined Hayter Engineering in 2015 and became a principal in 2018.

Tyler Creamer is a licensed professional engineer in Texas, Oklahoma, Arkansas, and Louisiana. He holds a Bachelor of Science Degree in Civil Engineering from the University of Texas at Arlington. Tyler joined Hayter Engineering in 2009. He was promoted to Project Manager in 2016 and became a Principal in 2018. Since joining Hayter Engineering Tyler has gained significant experience in water and wastewater design, water and wastewater planning, water quality testing, sidewalks, pedestrian and bicycling trail design, and construction review for a broad cross-section of civil works.

Kevin Vanhoozier is a licensed professional engineer in Texas, Oklahoma, Arkansas, and Louisiana. He holds a Bachelor of Science Degree in Civil Engineering from the University of Texas at Arlington. Kevin joined Hayter Engineering in 2013. Kevin's experience includes water and wastewater facility projects, streets and drainage projects, and construction review as a Design Engineer his first 3 years at Hayter Engineering and was promoted to Project Engineer in 2017 where he continued to gain experience in these same areas but also has worked in the areas of water pump stations, lift stations, planning, water modeling, and permitting. Based on his substantial project experience and management skills he developed, Kevin was promoted to Project Manager in 2019.



**Christopher M. Donnan,
P.E., CFM**
**Principal / Project
Manager**



Tyler C. Creamer, P.E.
**Principal / Project
Manager**



Kevin R. Vanhoozier, P.E.
Project Manager

Commercial / Industrial Development Experience

The experience descriptions provided on the following pages are intended to provide the major infrastructure areas that Hayter Engineering has significant experience.



Commercial/Industrial Development



Public Buildings



Educational Facilities



Stormwater



Streets and Roadways



Sidewalks and Lighting



Water Distribution



Wastewater Collection



Wastewater Lift Stations



Wastewater Treatment Plants



Surveying Services
Commercial & Industrial



Surveying Services
Educational Facilities



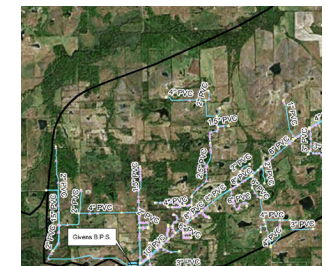
Surveying Services - Design



Surveying Services
Construction Layout



Surveying Services
FEMA



Geographic Information
System (GIS)

Commercial / Industrial Development



Project planning, zoning, permitting and plats are demanding processes which require experienced professionals.

Hayter Engineering can guide you through the extensive regulatory environment for new developments. Our familiarity with municipal development requirements mean we can help move your project forward as quickly as possible.

Cost effective construction of your project requires complete, accurate plans and specifications. Our staff of licensed professional engineers can provide comprehensive design documents in a timely manner – and if required, we can assist you in obtaining a construction contractor and can be on-site during construction to facilitate the construction process. Your development project will benefit from the qualifications and experience of Hayter Engineering.

Hayter Engineering has designed many high quality commercial developments and industrial sites in a cost effective and timely manner. Our team of licensed professionals and support staff are ready to serve your needs.

SERVICES OFFERED:

Preliminary and Final Plats
Site Plans
Boundary, Construction, and
Topographic Surveys
Zoning and Construction Permitting
Storm Water Plans
Paving Design
Grading and Drainage Design
Water and Wastewater Design
Construction Bid and Award
Construction Review

CLIENTS & LOCATIONS:

AutoZone, Terrell, TX
First United Methodist Church, Mt.
Vernon, TX
KLZ Stone Group, Inc., Commerce, TX
Air Evac base, Paris Regional Medical
Center, Paris, TX
Urban Air Project, Rina Park, Ardmore,
OK
Liberty National Bank Branch
Expansion, Paris, TX
Discount Tire Center, Ardmore, OK
South Village Development, Bonham, TX
Neighbors Emergency Center - Paris, TX
Kelso Technologies - Bonham, TX
Subway - Paris, TX
LaQuinta - Paris, TX
Oak Meadows Townhomes Office
Building - Commerce, TX
Sonic Drive-In - Paris, TX
Dr. Joseph Xavier - Paris, TX
Physician's Choice Dialysis Center -
Paris, TX
Daisy Farms - Lamar County, TX
Commerce EDC Industrial Sites -
Commerce, TX
Guaranty Bank - Paris, TX
Hydro Aluminium - Commerce, TX
NextEra Lamar Energy Plant - Paris, TX
Dialysis Center - Idabel, OK
Brentwood Terrace Healthcare and Rehab
Center - Paris, TX
Holiday Inn/Comfort Inn - Paris, TX
AT&T Wirelss Expo - Paris, TX
IHOP - Mt. Pleasant, TX
Burger King - Bonham, TX
First Federal Bank - Clarksville, TX

Public / Office Buildings



The public buildings in your community reflect your commitment to the future and to municipal service. Careful planning is essential to develop an aesthetically pleasing site that will maximize the public use of the facility.

Your public building also requires environmental approvals and thorough, complete civil design and construction specifications for grading, paving, drainage, water and wastewater service.

During construction, your project deserves careful, independent construction review. Hayter Engineering can provide all required construction related services including job site review, construction administration, material testing, record drawings and warranty review.

For more than 60 years, Hayter Engineering has assisted municipalities and private entities in obtaining well designed, attractive, functional and cost-effective public building facilities.

Our group of professional planners, surveyors and engineers will work closely with you to achieve projects which fit your budget and schedule, and which incorporate quality design.

SERVICES OFFERED:

Environmental Site Assessment
Boundary Surveying
Platting
Site Planning
Civil Engineering Design
Construction Bid & Award
Construction Phase Engineering

PROJECTS PERFORMED:

- Lamar County Water Supply District, Office Building, Brookston, TX
- Storm Shelter, Point, TX
- Storm Shelter, East Tawakoni, TX
- Santa Fe Depot, Paris, TX
- New City Hall, Bonham, TX
- Storm Shelter, Avery, TX
- Storm Shelter, De Kalb, TX
- Kelso Technologies Building, Bonham, TX
- Site Plant Layout - Covenant Christian Church, Paris, TX
- Recreational Classroom Facility, First Baptist Church, Bonham, TX
- Fire Station, Reno, TX
- Animal Shelter, Commerce, TX
- City Park Restroom, Commerce, TX
- Mary King Park Restroom Facility, Lake Bob Sandlin State Park, Titus County, TX

Educational Facilities



The educational buildings in your community reflect your commitment to the future. Careful planning is essential to develop an aesthetically pleasing site that will maximize the public use of the facility.

Your educational building also requires environmental approvals and thorough, complete civil design and construction specifications for grading, paving, drainage, water and wastewater service.

During construction, your project deserves careful, independent construction review. Hayter Engineering can provide all required construction related services including job site review, construction administration, material testing, record drawings and warranty review.

For more than 60 years, Hayter Engineering has assisted colleges and schools in obtaining well designed, attractive, functional and cost-effective campus improvements.

Our group of professional planners, surveyors and engineers will work closely with you to achieve projects which fit your budget and schedule, and which incorporate quality design.

SERVICES OFFERED:

Environmental Site Assessment
Surveying - All types
Platting
Site Planning
Civil Engineering Design
Construction Bid & Award
Construction Phase Engineering

PROJECTS PERFORMED:

- Chisum ISD 2016 Bond Improvements, Paris, TX
- Paris ISD CTE Building, Paris, TX
- Women's and Men's Dormitories, Paris Junior College, Paris, TX
- Commerce High School, Commerce, TX
- Paris High School, Paris, TX
- Chisum ISD Administration Building, Paris, TX
- Detroit ISD Gymnasium, Detroit, TX
- Roxton ISD Fine Arts Center, Roxton, TX
- Electrical Design & Construction Review of classroom wing HVAC Improvements - Paris ISD - A.M. Aiken Elementary, Paris, TX
- North Lamar ISD Sports Complex, Paris, TX
- Sam Rayburn ISD Bus Loop, Bonham, TX
- New Elementary School - water lines & sanitary sewer, drainage, three parking lots - Lone Oak ISD, Lone Oak, TX
- Van Alstyne ISD Training Center, Van Alstyne, TX
- New Lift Station & WWTP - Prairieland ISD, Pattonville, TX
- Technical Specifications for Utility Extension - Morning Star Academy, Bonham, TX

Stormwater



Water is a vital resource as well as a powerful force of nature. Hayter Engineering's stormwater experts work with our clients to solve their problems and meet their needs associated with the management and control of stormwater runoff. With years of experience in hydrology, hydraulics, and stormwater management we can provide our clients with strategies and facilities that control and manage stormwater runoff. Our services begin with planning and preliminary engineering, extending through design and construction review with a focus on the development of feasible and cost effective solutions.

Public and private clients alike rely on Hayter Engineering's expert storm-water related services. These services focus on the development of structural and non-structure measures to protect human life and reduce flood safety risks, prevent damage to public and private property, minimize the disruption of your citizen's activities caused by stormwater runoff, and protect water quality.

Hayter Engineering has performed numerous projects for municipalities, developers, commercial clients, and private citizens and will cover your permitting, planning, design, and construction needs for stormwater-related projects.

SERVICES

- Watershed Analysis
- Storm Sewer Design
- Master Planning
- Funding
- Open Channel Analysis & Design
- Culvert/Bridge Analysis & Design
- Detention/Retention Pond Analysis & Design
- Stormwater Pollution Prevention Plans
- Permitting
- Stream Assessment
- Erosion Control/Streambank Stabilization

STORMWATER MODELING

- HEC-HMS & HEC-RAS
- XP-SWMM
- EPA-SWMM, EPA-SWMM
- HY-8

PROJECTS

- **Stormwater Analysis & Design:** Liberty National Bank, Paris, TX; Chisum ISD; Paris ISD; South Village Development, Shady Shores Senior Living Development, Bonham, TX
- **Master Drainage Plan:** Paris; Commerce
- **Channel Design:** Johnson Woods, 24th Street, Paris, TX; Cooper to Culver Street, Commerce, TX
- **Drainage:** Charity Road, Commerce, TX; Majors Field, L3 Communications, Greenville, TX;
- **Culvert Analysis & Design:** Hendrix Ranch; Island Bayou & Main Street, Bonham, TX; Pig Branch, Bonham, TX; Holiday Inn Express, Bonham, TX
- **Detention Analysis & Design:** Liberty National Bank, Paris, TX; Physicians Choice, Dialysis Center, Paris, TX; Shady Shores Senior Living Development, South Village Development, Bonham, TX; Chisum ISD; Paris ISD; Southern MultiFoods, Taco Bell, Paris, TX
- **Stormwater Permitting:** Airports : Paris, Bonham, Commerce; WWTP: Commerce, Bonham; Industry: Paris Iron & Metals, Paris, TX

Streets and Roadways



Roadways are investments that frame the streetscape in your community. Aesthetics, environment, function and capacity are integral parts of a successful roadway project. Appropriate design maximizes your investment in your roadway infrastructure.

Quality roadway projects require expert planning for present and future uses, attention to soil conditions, a design that encourages longevity, and a commitment to completion of construction on time and within budget.

Hayter Engineering can assist you beginning with planning through the design of your roadways. We provide quality design that reflects existing conditions and future needs. Construction review services are available to ensure a high quality project for your citizens.

During construction, your project deserves careful, independent construction review. Hayter Engineering can provide all required construction related services including job site review, construction administration, material testing, record drawings and warranty review.

SERVICES OFFERED:

Grant Applications
Master Drainage Plans
Master Street Plans
Environmental Clearances
Permitting
Right-of-Way Surveys
Civil Design
Construction Bid & Award
Construction Review
Warranty Review

PROJECTS LOCATIONS:

- Street Improvements:

Arp	Greenville Board of Development
Avery	Paris
Bonham	Reno
Clarksville	Roxton
Commerce	Trenton
Cooper	Trinidad
De Kalb	Trinidad Economic Development Corporation
Deport	Van Alstyne
Detroit	Winnsboro
Edgewood	
Fairfield	

- KLZ Stone Supply Infrastructure, Commerce, Texas - Marble Way & Granite Run
- Hydro Aluminum, Commerce, Texas - Economic Drive
- Schlumberger Way (Pecan Street Extension), Bonham, TX
- South Collegiate Drive Reconstruction, Paris, TX
- Stillhouse Road Widening, Paris, TX
- Hearne Street Extension, Paris, TX

Sidewalks and Lighting



Sidewalks and lighting create aesthetic, functional, safe/ADA compliant and much needed pedestrian access for your community. Sidewalks and lighting serve existing businesses as well as to welcome new business ventures. Appropriate design maximizes your investment in your community.

Quality sidewalk and lighting projects require expert planning for present and future uses, attention to the needs of the community, a design that encourages longevity, and a commitment to completion of construction on time and within budget.

Hayter Engineering can assist you with possible financial opportunities and thorough planning for your sidewalk and lighting needs. We provide quality design that reflects existing conditions and future needs.

During construction, your project deserves careful, independent construction review. Hayter Engineering can provide all required construction related services including job site review, construction administration, material testing, record drawings and warranty review.

SERVICES OFFERED:

Grant Applications
Environmental Clearances
Permitting
Right-of-Way Surveys
Civil Design
Construction Bid & Award
Construction Review

PROJECTS PERFORMED:

- SH 37 & FM 515 Sidewalks - Winnsboro, TX
- Northern Sidewalks & Southern Sidewalks - Edgewood, TX
- Live Oak & Maple Street Sidewalks - Commerce, TX
- North & Texas Street Sidewalks - Emory, TX
- Downtown Sidewalks - Quinlan, TX
- Downtown Sidewalks - Naples, TX
- Alamo Street Sidewalks - Commerce, TX
- Safe Routes to Schools – Paris, TX
- Sidewalk Reconstruction - Commerce, TX
- Downtown Streetscape – Paris, TX
- Heritage District & Main Street – Bonham, TX & Bonham Economic Development Corporation
- Heritage Square Sidewalk Reconstruction – Cooper, TX
- Heritage Park sidewalks, paving and drainage, Paris, TX
- Downtown Sidewalks – Paris, TX
- Clarksville Street Sidewalks – Paris, TX
- Bonham Street Sidewalk Replacement – Paris, TX
- Texas A&M-Commerce Sidewalks – Commerce, TX
- City Hall Lot Landscaping & Sidewalks – Commerce, TX

Wastewater Collection



Wastewater collection mains must collect and deliver wastewater to your treatment plant without excessive infiltration/inflow of ground and storm waters. Lift stations must be properly designed for efficient management of wastewater flows. Appropriate planning, including flow monitoring, smoking and television testing of mains and proper design for area soils and other factors, are necessary for quality construction.

We can assist you with thorough planning of your wastewater system needs, construction, lift stations, obtaining easements and other permits. We provide quality designs that reflect environmental considerations and cost effectiveness.

During construction, your project deserves careful, independent construction review. Hayter Engineering can provide all required construction related services including job site review, construction administration, material testing, record drawings and warranty review.

All of these services combine to ensure you get the high quality product your community or business deserves.

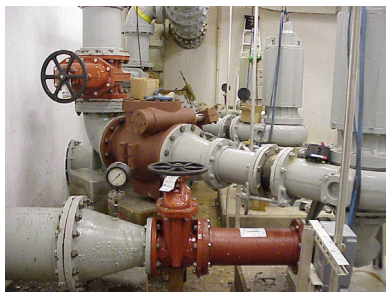
SERVICES OFFERED:

Application for Finance
Preliminary Engineering Report
Environmental Assessments
Surveying
Cost Estimating
Civil Design
Construction Bid & Award
Construction Review
Record Drawings

PROJECTS PERFORMED:

- Annona, TX
- Arp, TX
- Blossom, TX
- Bonham, TX
- Commerce, TX
- Cooper, TX
- De Kalb, TX
- Deport, TX
- Detroit, TX
- Edgewood, TX
- Emory, TX
- Grand Saline, TX
- Howe, TX
- Malakoff, TX
- Paris, TX
- Pecan Gap, TX
- Point, TX
- Reno, TX
- Roxton, TX
- Terrell, TX
- Tioga, TX
- Trenton, TX
- Trinidad, TX
- Wills Point, TX
- Winnsboro, TX
- Wolfe City, TX

Wastewater Lift Stations



Wastewater lift stations are a critical element in a collection system. Proper planning for current and future capacities is a must. Design features have to be developed to meet the needs of each installation ensuring quality construction, required functions and controls, and trouble-free operation.

Hayter Engineering has designed and rehabilitated hundreds of lift stations throughout its 60 year history. We can assist you with thorough planning of lift station design or rehabilitation. We provide quality designs that reflect environmental considerations and cost effectiveness.

During construction, your project deserves careful, independent construction review. Hayter Engineering can provide all required construction related services including job site review, construction administration, material testing, record drawings and warranty review.

All of these services combine to ensure you get the high quality product your community deserves.

SERVICES OFFERED:

- Site Acquisition
- Boundary and Topographic Surveys
- Permitting
- Environmental Clearances
- Grant Applications
- Civil Design
- Construction Bidding
- Construction Review

PROJECTS PERFORMED:

- Alba-Golden ISD, Alba, TX - High School Lift Station Discharge
- Arp, TX - Wastewater Collection Lines & Lift Station
- Avery, TX - South Lift Station, and WWTP Master Lift Station
- Bonham, TX - North Lift Station & South Lift Station
- Commerce, TX - WWTP Master Lift Station Pump Replacement, Replacement Lift Station & Line Rehabilitation, and Master Lift Station Valve Replacement
- Cooper, TX - WWTP Master Lift Station
- Detroit, TX - WWTP Master Lift Station Replacement
- East Tawakoni - Rehabilitation of 9 Lift Stations
- Emory, TX - Katy Lift Station & Force Main; Highway 69 Lift Station & Force Main; Brookshires area Lift Station & Force Main, and WWTP Master Lift Station
- Malakoff, TX - Master Lift Station Rehabilitation
- Paris, TX - SE Lift Station Analysis
- Reno, TX - New Lift Station
- Star Harbor, Makakoff, TX - Lift Station Renovations
- Trenton, TX - W Sanders Street Lift Station, Highway 69 Lift Station, S Pearl Street Lift Station, and High School Lift Station
- Widom, TX - FM 1743 N. LS
- Winfield, TX - Lift Station Rehabilitation
- Wolfe City, TX - Wylie St. Lift Station

Wastewater Treatment Plants



Water is our most precious resource. High quality treated water is essential to public health and safety. Wastewater treatment plants must meet stringent State standards for water quality and quantity, and can be expensive to operate and maintain. Increasingly more complex technology is required to allow treatment facilities to meet standards, and minimize energy and other operational costs.

Caring for the environment is critical in our modern world. Wastewater treatment plants must produce clean water in an energy efficient, cost effective manner. Ease of operation and compliance with regulatory authorities are both required as well.

Hayter Engineering has extensive familiarity with wastewater treatment plant planning, design, permitting and construction. Our experience allows us to design plants that are environmentally friendly, energy efficient, easier to operate and maintain, and which produce the high quality treated water your community requires.

During construction, your project deserves careful, independent construction review. Hayter Engineering can provide all required construction related services including job site review, construction administration, material testing, record drawings and warranty review.

SERVICES OFFERED:

Wastewater Treatment Plant Design
Renovations & innovative Technology

Environmental Assessment

Design Surveys

Financial Planning Assistance

Construction Bid & Award

Construction Review

Handicapped Accessibility Review

Permit Assistance

PROJECTS LOCATIONS:

- Annona
- Arp
- Avery
- Bailey
- Bonham
- Commerce
- Cooper
- De Kalb
- Deport
- Detroit
- East Tawakoni
- Edgewood
- Emory
- Fairfield
- Ladonia
- Paris
- Pecan Gap
- Point
- Reno
- Roxton
- Tioga
- Trenton
- Winnsboro

Surveying Services - Commercial & Industrial



With a registered professional surveyor licensed in both Texas and Oklahoma, we offer a wide variety of survey related services to meet all of your survey needs. We have 2 field survey crews with equipment for both crews to utilize GPS or conventional survey equipment. We offer boundary surveys for property transactions, topographic surveys for construction design, preliminary plats, final plats, & master plats for proposed developments, and construction staking for new and existing facilities improvements.

At Hayter Engineering we utilize GPS as well as conventional survey equipment in the field along with the latest AutoCAD and GIS software in the office to make sure that all requests are taken care of promptly with accurate results. We are very familiar with coordinating between engineers, architects, government agencies and contractors to ensure projects stay on schedule.

COMMERCIAL/INDUSTRIAL SURVEYS INCLUDE:

- Kimberly-Clark Corporation, Paris, Texas
- Campbell's Soup Corporation, Paris, Texas
- Turner Industries, Paris, Texas
- Southern Multifoods, Paris, Texas
- Potters Industries, Paris, Texas
- Paris Regional Medical Center, Paris, Texas
- Paris Lakes Medical Center, Paris, Texas
- RKMS - Neighbors Emergency Clinic, Paris, Texas
- Lamar Power Partners/Panda Energy, Paris, Texas
- Daisy Dairy, Lamar County, Texas
- LaQuinta Inns, Paris, Lindale, Allen, and Euless, Texas
- Holiday Inn Express, Paris, Texas
- Comfort Inn & Suites, Paris, Texas
- Kings Inn, Paris, Texas
- Subway, Paris, Texas
- Paris Towne Center, Paris, Texas
- Lamar Industrial, Mt. Pleasant, Texas
- First Federal Bank, Paris & Clarksville, Texas
- Brentwood Terrace Healthcare & Rehab, Paris, Texas
- IHOP, Mt. Pleasant, Texas
- Hydro Aluminum Smelting Plant, Commerce, Texas
- Brownstone Development, Nash, Texas
- Paris Family Fun Center, Paris, Texas
- Venture Vertical, Paris, Texas
- The Loft at 123, Paris, Texas
- The T-Shirt Shoppe, Paris, Texas

SERVICES OFFERED:

FEMA Surveys
ALTA & Land Title Surveys
Construction Site & Utility Line Staking
Boundary Surveys
Construction Layout
Easement Surveys
GPS Surveying
Photogrammetric Ground Control
Preliminary & Final Plats
Record Drawing & Improvement Surveys
Topographic Surveys
GIS/LIS Surveys
Design Surveys

FOR MORE INFORMATION CONTACT:

Kevin K. Whitley, R.P.L.S.
Survey Manager
Phone: 903-785-0303
Email: kwhitley@haytereng.com

Surveying Services - Educational Facilities



Hayter Engineering has been an integral part in many design surveys, topographic surveys, boundary surveys, and construction staking for new and existing facilities improvements for School Districts and Colleges.

PROJECTS INCLUDE:

- Chisum ISD - design surveying in for 2016 campus wide bond improvements
- Paris ISD - design surveying for Career Technology Education facility
- North Lamar ISD - design survey for construction of indoor training facility, construction staking
- Paris Junior College - design surveys for new dormitories, easement surveys
- Texas A&M University-Commerce - design surveys, property-boundary surveys
- Chisum ISD - campus wide topographic survey, final plat preparation and approval process, project specific topographic surveys, and construction staking surveys
- Clarksville ISD - library roof survey for contractor, design survey for high school and middle school, 83 acre topographic survey at baseball fields
- Cooper ISD - design surveys for new construction at multiple sites
- Detroit ISD - design surveys at elementary and high school for new construction, boundary survey at elementary school
- Paris ISD - design surveys for TxDOT transportation project for Safe Routes to Schools sidewalks at Crockett Middle School and Justiss Elementary
- Prairiland ISD - design survey for new construction
- Rivercrest ISD - design survey for new construction and construction staking

At Hayter Engineering we utilize GPS as well as conventional survey equipment in the field along with the latest AutoCAD and GIS software in the office to make sure that all requests are taken care of promptly with accurate results. We are very familiar with coordinating between engineers, architects, government agencies and contractors to ensure projects stay on schedule.

SERVICES OFFERED:

FEMA Surveys
ALTA & Land Title Surveys
Construction Site & Utility Line Staking
Boundary Surveys
Construction Layout
Easement Surveys
GPS Surveying
Photogrammetric Ground Control
Preliminary & Final Plats
Record Drawing & Improvement Surveys
Topographic Surveys
GIS/LIS Surveys
Design Surveys

FOR MORE INFORMATION CONTACT:

Kevin K. Whitley, R.P.L.S.
Survey Manager
Phone: 903-785-0303
Email: kwhitley@haytereng.com

Surveying Services - Design



Hayter Engineering offers a wide variety of survey related services to meet all of your survey needs. We have completed over 1,000's of topographic design surveys for public and private clients. We also offer boundary surveys for property transactions, construction staking for new and existing facilities improvements, master plats for proposed developments, and surveys for many other purposes.

DESIGN SURVEYS INCLUDE:

Topographic Surveys for Infrastructure Design for Rural Water Systems:

- 410 WSC
- Bright Star-Salem SUD
- Campbell WSC
- Central Bowie County WSC
- Delta County MUD
- Franklin County WD
- Gafford Chapel WSC
- Golden WSC
- Lamar County WSD
- Oak Grove WSC
- Red River County WSC
- Shady Grove WSC

Topographic Surveys for Infrastructure Design in the Cities of:

- Alba
- Annona
- Avery
- Blossom
- Bonham
- Bowie
- Commerce
- Cooper
- De Kalb
- Deport
- Detroit
- East Tawakoni
- Edgewood
- Emory
- Fairfield
- Grand Saline
- Greenville
- Howe
- Malakoff
- Miller's Cove
- Paris
- Point
- Quinlan
- Reno
- Roxton
- Terrell
- Tioga
- Trenton
- Trinidad
- Whitesboro
- Whitewright
- Wills Point
- Windom
- Winnsboro
- Wolfe City
- Kimberly-Clark Corporation, Paris, Texas
- Kings Inn, Paris, Texas
- Lamar Power Partners/Panda Energy, Paris, Texas
- Daisy Dairy, Paris, Texas
- LaQuinta Inns, Lindale, Allen, and Euless, Texas
- Brentwood Terrace Healthcare and Rehab Center, Paris, Texas
- Educational Facility design surveys for: Paris ISD, North Lamar ISD, Prariland ISD, Chisum ISD, Cooper ISD, Detroit ISD, Clarksville ISD, and Paris Junior College
- Paris Regional Medical Center, Paris, Texas
- Paris Lakes Medical Center, Paris, Texas
- RKMS - Neighbors Emergency Clinic, Paris, Texas
- IHOP, Mt. Pleasant, Texas
- First Federal Bank, Clarksville and Paris, Texas
- Hydro Aluminum Smelting Plant, Commerce, Texas
- Campbell's Soup Corporation, Paris, Texas
- Turner Industries, Paris, Texas
- Southern Multifoods, Paris, Texas
- Potters Industries, Paris, Texas
- Subway, Paris, Texas
- Paris Towne Center, Paris, Texas
- Lamar Industrial, Mt. Pleasant, Texas
- Brownstone Development, Nash, Texas
- Lamar Industrial, Mt. Pleasant, Texas

SERVICES OFFERED:

FEMA Surveys
ALTA & Land Title Surveys
Construction Site & Utility Line Staking
Boundary Surveys
Construction Layout
Easement Surveys
GPS Surveying
Photogrammetric Ground Control
Preliminary & Final Plats
Record Drawing & Improvement Surveys
Topographic Surveys
GIS/LIS Surveys
Design Surveys

FOR MORE INFORMATION CONTACT:

Kevin K. Whitley, R.P.L.S.
Survey Manager
Phone: 903-785-0303
Email: kwhitley@haytereng.com

Survey Services - Construction Layout



Hayter Engineering has been an integral part in many construction layout projects for both public and private clients. Our construction layout projects have ranged in size from one homeowner on a half-acre lot to the 7,000 acre Daisy Dairy Facility where multiple engineers, architects, and construction firms were involved.

CONSTRUCTION LAYOUT SURVEYS INCLUDE:

- City of Paris CIP Water & Sewer Line Replacements
- Daisy Dairy Facility
- City of Commerce WWTP Lagoon Closure
- Lamar Power Partners/Panda Energy 107 acre facility
- Daisy Farms Raw water main 4+ miles
- Paris Lakes Regional Medical Center
- Oak Creek Subdivision Layout
- Sewer line staking for numerous municipalities
- Water line staking for numerous municipalities
- Street layout staking for numerous municipalities
- Several commercial developments including: Holiday Inn Express and Comfort Suites - Paris TX; Brentwood Terrace Healthcare & Rehab Center - Paris TX; LaQuinta Inn - Lindale, Allen & Euless TX; First Federal Bank- Paris and Clarksville TX; IHOP – Mt. Pleasant TX;
- Hydro Aluminum Smelting Plant
- City of Blossom city lake dam rehabilitation

Utilizing GPS as well as conventional survey equipment in the field and AutoCAD and GIS software in the office we can assure you that all of your construction layout requirements can be met. Additionally, at Hayter Engineering we are very familiar with coordinating between engineers, architects, government agencies and contractors to ensure projects stay on schedule.

SERVICES OFFERED:

FEMA Surveys
ALTA & Land Title Surveys
Construction Site & Utility Line Staking
Boundary Surveys
Construction Layout
Easement Surveys
GPS Surveying
Photogrammetric Ground Control
Preliminary & Final Plats
Record Drawing & Improvement Surveys
Topographic Surveys
GIS/LIS Surveys
Design Surveys

FOR MORE INFORMATION CONTACT:

Kevin K. Whitley, R.P.L.S.
Survey Manager
Phone: 903-785-0303
Email: kwhitley@haytereng.com

Surveying Services - FEMA



Hayter Engineering has completed numerous FEMA related surveys for public and private clients. We offer multiple services, including Special Flood Hazard Area Delineation, Elevation Certificates, and Letter of Map Change applications.

FEMA Related Surveys Include:

- T-Shirt Shoppe, Paris, TX - LOMR Application
- Sonic Restaurant, Paris, TX - Elevation Certificate
- Pickering LOMR Application, Paris, TX - for business complex which included Paris Chiropractic, Paris Glam, Peoples Insurance, Cash Max, On Call Home Health, The Vibe Health & Fitness Studio, All Cuts Hair Salon, and Super Tan
- Salzman LOMR-F Application, Paris, TX - for business complex which included Paris Medical Plaza, Primary Care Associates, Digital Mammography, Beautiful Savior Lutheran Church, and Calvary Paris Church
- Lamar Energy Resources, Lamar County, TX - Special Flood Hazard Area Determination & Delineation for multiple properties and easements owned by Lamar Energy Resources.
- Paris Towne Center, Paris, TX - Flood Zone Delineation
- Subway Sandwiches, Paris, TX - FEMA Floodplain Protest, Flood Elevation Delineation
- LOMR Applications for: Multiple Duplex, Singe Family Residence, and Multiple Lot/Parcel
- Elevation Certificates & LOMR Applications for Investment properties and bank-owned properties
- Special Flood Zone Hazard Area Determination and Delineation for multiple subdivisions and additions.

In the field we utilize both conventional surveying equipment and GPS on a Real Time Network allowing us to economically cover a much larger area. In-office we are equipped with AutoCAD and GIS software to handle files provided by FEMA and to expedite the preparation of FEMA applications.

Hayter Engineering is very familiar with coordination efforts between engineers, architects, government agencies and contractors to ensure your project stays on schedule.

SERVICES OFFERED:

FEMA Surveys
ALTA & Land Title Surveys
Construction Site & Utility Line
Staking
Boundary Surveys
Construction Layout
Easement Surveys
GPS Surveying
Photogrammetric Ground Control
Preliminary & Final Plats
Record Drawing & Improvement
Surveys
Topographic Surveys
GIS/LIS Surveys
Design Surveys

FOR MORE INFORMATION CONTACT:

Kevin K. Whitley, R.P.L.S.
Survey Manager
Phone: 903-785-0303
Email: kwhitley@haytereng.com