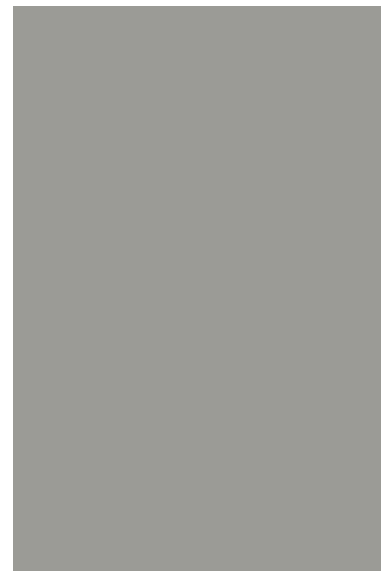
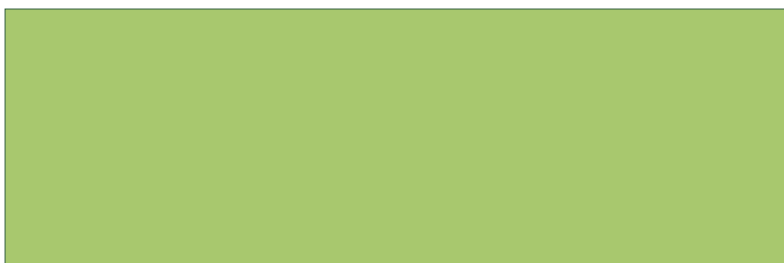
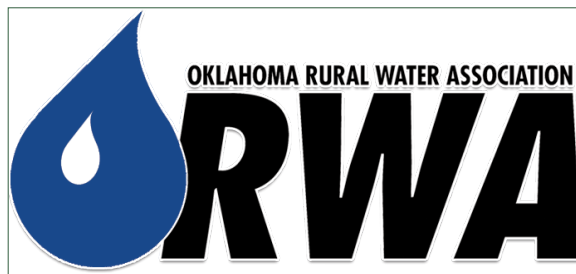


# HAYTER<sup>SM</sup> ENGINEERING

Practical Infrastructure **Solutions**

## Statement of Qualifications *for* **Rural Water Utilities Engineering Services**



## FIRM OVERVIEW

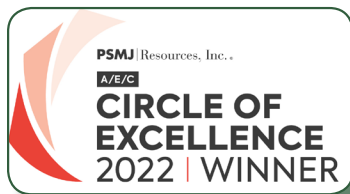
Fulfilling the infrastructure needs of rural water utilities with practical solutions was our firm's founding principle in 1957. 66 years later, the firm continues to operate under the same founding principle to primarily serve rural water utility and municipal clients, but now also serves educational entities, private developers, and industrial groups. Our services are offered in Texas, Oklahoma, and Arkansas.



From the beginning, careful attention to our clients' needs, budget and schedule has been a core principle. This will involve our technical capabilities but equally as important, open communication is always ensured so that you will be able to make informed decisions about your projects.

Over our 66 year history, our firm has developed an extensive list of services. These services are listed in the right hand column. In addition to these services, we have developed relationships with professional firms which allow us to provide geotechnical, environmental, structural, electrical, architectural, and material testing services for any project or situation you may require. Our services are offered in Texas, Oklahoma, Arkansas, and Louisiana.

In the end, our clients are able to benefit from over six decades of extensive planning, surveying, design and construction engineering experience which will be applied to each of your projects. Similarly, the same level of experience is available in securing grants/financing and meeting all regulatory requirements for each of your projects.



We believe a testament to our firm's trusted stewardship of our clients resources is reflected in the fact that Hayter Engineering has been selected for the "CIRCLE OF EXCELLENCE" award. The A/E/C Circle of Excellence represents the top 20 percent of

participants in PSMJ's annual A/E Financial Performance Benchmark Survey. PSMJ Resources, Inc., is the global leader in business management data and guidance for architects and engineers.

## LICENSES AND REGISTRATIONS

Texas Board of Professional Engineers and Land Surveyors:

TxEng F-315 & TxSurv F-10028600

Oklahoma State Board of Professional Engineers and Land

Surveyors: #CA 603 PE/LS

Arkansas State Board of Professional Engineers Certificate of

Authorization: #2521

## SERVICES / PROJECT TYPES

### CIVIL ENGINEERING

#### WATER SYSTEMS:

- Deep Wells & Pump Stations
- Distribution Systems
- Elevated & Ground Storage
- Treatment & Disinfection
- FEMA Floodplain Management

#### WASTEWATER SYSTEMS:

- Treatment
- Wastewater Permitting
- Gravity Sewer Collection
- Stormwater Permitting
- Water & Wastewater System Evaluations
- Lift Stations & Force Mains

#### HYDRAULICS & HYDROLOGY

#### PARKS & RECREATION

#### ROADWAYS, SIDEWALKS & TRAILS

### SURVEYING

- GIS/LIS
- Terrestrial LiDAR
- Topographic
- Construction
- Land Title
- Easements
- Record Drawings
- Photogrammetric Ground Control
- FEMA
- Boundary
- Improvement
- ALTA
- Platting
- Design

### MAPPING - GIS & AUTOCAD BASED

- Municipal, Water Utility, Industrial, Commercial, Private, and Educational Infrastructure
- Topographic
- Master Plans

### ENVIRONMENTAL ENGINEERING

- Environmental Reviews and Assessments
- State and Federal Discharge Permitting

### PLANNING

- Photo Realistic Renderings
- Infrastructure Master Planning
- Site Planning
- Water Conservation Plans
- Impact Fees

### RELATED SERVICES

- Securing Grants and/or Financing
- Bidding & Construction Management
- Record Drawings
- Warranty Review

## Our Core Team

**Mike Tibbets** is President of Hayter Engineering. As President, Mike serves as the firm's manager in the areas of business development, staff recruitment, business operations, and financial operations. Mike is also responsible for the firm's staff development and training. Since joining Hayter Engineering in 1989, Mike has developed a high level of experience in all phases of municipal and water utility infrastructure with a particular expertise in water treatment process evaluation. Prior to that time he had served as a Staff Engineer with the City of Paris and as a Research Assistant with the Texas Water Resources Institute. As a licensed engineer, Mike holds both a Master of Science in Civil Engineering and a Bachelor of Science in Civil Engineering from Texas A & M University. He has authored numerous publications, one of these being:

"Converting a Problem into an Opportunity: Achieving Compliance While Saving Money," TRWA (Texas Rural Water Association) QUENCH Magazine, July/August 2019

**Kevin Whitley** serves as a Vice President of Hayter Engineering, and is the firm's Survey Manager. Kevin joined Hayter Engineering in 1999, and has a Bachelor of Science from Stephen F. Austin State University. Kevin has been a registered professional land surveyor for the state of Texas since 2006, and a professional land surveyor for the state of Oklahoma since 2014. As Survey Manager Kevin is responsible for all Hayter Engineering surveying services including all surveying relating to the firm's engineering projects and the wide range of surveying services performed for commercial, industrial and individual property owners.

**Chris Donnan** is a licensed professional engineer in Texas, Oklahoma, Arkansas, and Louisiana. He holds a Bachelor of Science Degree in Civil Engineering from Texas A&M University, and a Master of Science Degree in Water Resources from Texas A&M University. Chris is also a Certified Floodplain Manager. Chris has extensive experience in public works planning, design and quality management, with expertise in the areas of hydrology, hydraulics, floodplain management, and geographic information systems (GIS). His experience involves working for several local, state, and regional entities. After 6 years with AECOM and 1½ years with Harrison, Walker & Harper, Chris joined Hayter Engineering in 2015 and became a Principal in 2018.



**Michael N. Tibbets, P.E.**  
**President**



**Kevin K. Whitley, R.P.L.S.**  
**Vice President / Survey  
Manager**



**Christopher M. Donnan,**  
**P.E., CFM**  
**Principal / Project  
Manager**

**Tyler Creamer** is a licensed professional engineer in Texas, Oklahoma, Arkansas, and Louisiana. He holds a Bachelor of Science Degree in Civil Engineering from the University of Texas at Arlington. Tyler joined Hayter Engineering in 2009. He was promoted to Project Manager in 2016 and became a Principal in 2018. Since joining Hayter Engineering Tyler has gained significant experience in water and wastewater design, water and wastewater planning, water quality testing, sidewalks, pedestrian and bicycling trail design, and construction review for a broad cross-section of civil works.

**Kevin Vanhoozier** is a licensed professional engineer in Texas, Oklahoma, Arkansas, and Louisiana. He holds a Bachelor of Science Degree in Civil Engineering from the University of Texas at Arlington. Kevin joined Hayter Engineering in 2013. Kevin's experience includes water and wastewater facility projects, streets and drainage projects, and construction review as a Design Engineer his first 3 years at Hayter Engineering. Kevin was promoted to Project Engineer in 2017 where he continued to gain experience in these same areas, but also has worked in the areas of water pump stations, lift stations, planning, water modeling, and permitting. Based on his substantial project experience and management skills he developed, Kevin was promoted to Project Manager in 2019, and became a Principal in 2020.



**Tyler C. Creamer, P.E.**  
**Principal / Project  
Manager**



**Kevin R. Vanhoozier, P.E.**  
**Principal / Project  
Manager**

## Rural Water Infrastructure Engineering & Surveying Experience

The experience descriptions provided on the following pages are intended to provide the major infrastructure areas that Hayter Engineering has significant experience.



Water Treatment Plants



Water Wells



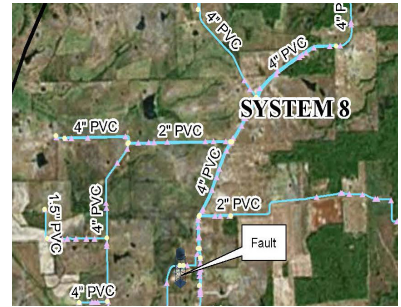
Water Pump Stations



Water Storage Facilities



Water Distribution



Geographic Information System (GIS)



Permit Assistance



Public / Office Buildings



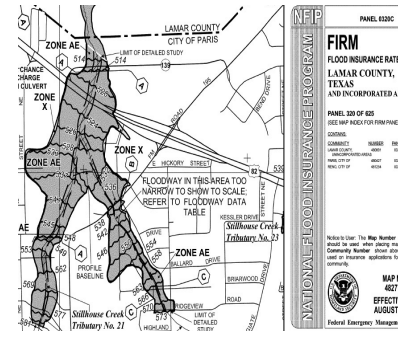
Surveying Services - Design



Planning



Surveying Services - Construction Layout



Surveying Services - FEMA

## Water Treatment Plants



Water is our most precious resource. High quality treated water is essential to public health and safety. Water treatment plants must meet stringent State standards for water quality and quantity; and can be expensive to operate and maintain. Increasingly more complex technology is required to allow treatment facilities to meet standards; and minimize energy and other operational costs.

Hayter Engineering has decades of experience evaluating and trouble shooting water treatment facilities and their operation. This expertise will be applied to each specific facility designed and all operational features for your plant. Where appropriate, all facilities will be designed for ease of future expansion. Additionally, we will look for opportunities to expand and/or rehabilitate existing facilities where feasible to reduce the project cost.

During construction, your project deserves careful, independent construction review. Hayter Engineering can provide all required construction related services including job site review, construction administration, material testing, record drawings and warranty review.

### SERVICES OFFERED:

Water Treatment Plant Design  
Renovations & innovative Technology  
Environmental Assessment  
Design Surveys  
Financial Planning Assistance  
Construction Bid & Award  
Construction Review  
Handicapped Accessibility Review  
Permit Assistance

### PROJECTS PERFORMED:

#### WATER TREATMENT PLANT IMPROVEMENTS FOR:

- Bonham, TX
- Commerce, TX
- Cooper, TX
- Edgewood, TX
- Emory, TX
- Kemp, TX
- Malakoff, TX
- Point, TX
- Star Harbor, TX
- Sulphur Springs, TX
- Trinidad, TX
- Wills Point, TX
- Wolfe City, TX
- Cypress Springs SUD

## Water Wells



Water wells are the sole source of water supply for many rural water utilities and municipalities.

Whether you are replacing an obsolete well or adding a new well to obtain additional water capacity, Hayter Engineering understands the importance of your wells to your customers.

Achieving safe, adequate supplies of water begins with proper planning to make sure the required well capacity is available as your demand increases. Planning requires a thorough understanding of the aquifer characteristics, including chemical constituents, geology and potential water volume. Efficient well design requires anticipating your future supply needs, attention to environmental issues, energy efficiency, a suitable budget, a commitment to high quality design, and timely completion of the project.

Hayter Engineering will design your well as an integral component of your overall water system with respect to storage, disinfection, and distribution.

Hayter Engineering has extensive experience with not only well design but also with all phases of a water well project from application for finance, test well, final well construction, to the completed well driller's report to the state.

### SERVICES OFFERED:

Application for Finance  
Site Acquisition  
Boundary and Topographic Surveys  
Permitting  
Environmental Clearances  
Grant Applications  
Civil Design  
Construction Bidding  
Construction Review

### PROJECTS PERFORMED:

- Campbell WSC, Texas - Deep Well #5
- Golden WSC, Texas - Deep Water Well #6, #7 & #8
- Red River County WSC, Texas - Deep Well - FM 911 South
- Hickory Creek SUD - Deep Well
- Lake Fork WSC - Deep Well #4
- Bright Star-Salem SUD - Well #6 & Lynn Well #9
- Sharon WSC - Well #4
- City of Alba, Texas - Deep Water Well & Farrington Street Deep Well
- City of Bells - Deep Well
- City of Bogata, Texas - Deep Well #7
- City of Savoy - Deep Well
- City of Tioga, Texas - Deep Well #4, and Water Well #5
- City of Trenton - Deep Well
- City of Wolfe City, Texas - Deep Well #2
- City of Yantis - Deep Well #6

## Water Pump Stations



Water availability is key to meeting customer usage demands. Having the proper pumping facilities is essential in meeting those demands. These pump stations must meet the State design criteria and any special requirements of your system. Their design must consider the water source as well as the pumping endpoint. Green designs using SCADA, variable frequency drives, and other energy design features are an important consideration. Throughout this process, consideration needs to be given to the future growth of the system being served.

Hayter Engineering has a broad range of design experience with pump stations for transferring water from treatment facilities or wells to the distribution system. These designs are often coupled with the need for and design of pressure sources such as elevated tanks, standpipes or hydro-pneumatic tanks.

During construction, your project deserves careful, independent construction review. Hayter Engineering can provide all required construction related services including job site review, construction administration, material testing, record drawings and warranty review.

### SERVICES OFFERED:

- Site Acquisition
- Boundary and Topographic Surveys
- Permitting
- Environmental Clearances
- Grant Applications
- Civil Design
- Construction Bidding
- Construction Review

### PROJECTS PERFORMED:

- Bowie County, TX - Oak Grove Pump Station
- Brashear WSC, Brashear, TX- Booster Pump Station
- Bright Star-Salem SUD, Alba, TX - Booster Pump Station Rehabilitation and Upgrade
- Central Bowie County WSC, New Boston, TX - Dekalb Pump Station Modifications
- Daisy Farms, Lamar County, TX - Raw Water Pump Station and Flow Meter
- Delta County MUD, Cooper, TX - Urgent Need FM 64 BPS
- Gafford Chapel WSC, Sulphur Springs, TX - Pump Station Renovation
- Golden WSC, Golden, TX - BPS
- Lamar County WSD, Brookston, TX - Western System BPS, Blossom BPS, Key West BPS, Givens BPS, Lake Crook BPS, and Tigertown BPS
- Nevada WSC, Nevada, TX - Booster Pump Stations and Ground Storage Piping
- Shady Grove WSC, Greenville, TX - Booster Pump Station
- City of Bonham, TX - High Service Booster Pump Station
- City of Greenville, TX - Centerpoint Pump Station
- City of Emory, TX - Booster Pump Station
- City of Paris, TX - Center Street Booster Pump Station
- City of Trinidad, TX - New Raw Water Pump Station
- City of Wolfe City, TX - WTP Expansion and New High Service Booster Pump Station



## Water Storage Facilities



Water is an increasingly scarce commodity. Your water system should be designed to provide appropriate water pressure, adequate supplies of treated water, and water storage which meets State standards for potable water providers.

Hayter Engineering has designed hundreds of storage/pressure sources including legged and single pedestal elevated tanks, all welded and bolted steel ground storage tanks, all welded steel standpipes and hydro-pneumatic pressure tanks. All such designs require thorough planning for current and future customers, attention to environmental issues, energy efficiency, a suitable budget, a commitment to high quality design, and timely completion of your project.

### SERVICES OFFERED:

Site Acquisition  
Boundary and Topographic Surveys  
Permitting  
Environmental Clearances  
Grant Applications  
Civil Design  
Construction Bidding  
Construction Review

### PROJECTS PERFORMED:

#### WATER STORAGE FACILITIES FOR:

- 410 WSC
- Bright Star-Salem SUD
- Campbell WSC
- Delta County MUD
- Fruitvale WSC
- Gafford Chapel WSC
- Golden WSC
- Hickory Creek SUD
- Lake Fork WSC
- Lamar County WSD
- MJC WSC
- Nevada WSC
- Red River County WSC
- Shady Grove WSC
- Sharon WSC
- South Franklin WSC
- Arp
- Bogata
- Blossom
- Bonham
- Commerce
- Cooper
- De Kalb
- Detroit
- East Tawakoni
- Edgewood
- Emory
- Farmersville
- Grand Saline
- Greenville
- Josphine
- Malakoff
- Paris
- Point
- Quinlan
- Quitman
- Reno
- Tioga
- Trinidad
- Van Alstyne
- Windom
- Yantis

## Water Distribution



Water distribution systems are essential to delivering safe drinking water to your customers, providing fire protection, and providing water to commercial and industrial businesses. Adequate water pressure is required to meet public health requirements and State standards. These goals can be met with a water system plan that models hydraulic demand in the system, and a design that maximizes benefit to current and future customers while also considering existing utilities, required easements, and the effect on nearby customers.

We can assist you with thorough planning and design of your water distribution system. We provide quality design that reflects environmental considerations and cost effectiveness.

During construction, your project deserves careful, independent construction review. Hayter Engineering can provide all required construction related services including job site review, construction administration, material testing, record drawings and warranty review.

All of these services combine to ensure you get the high quality product your community or business deserves.

### SERVICES OFFERED:

Financial Application  
Preliminary Engineering Report  
Environmental Assessments  
Surveying  
Cost Estimating  
Civil Design  
Construction Bid & Award  
Construction Review  
Record Drawings

### PROJECTS PERFORMED:

36" raw water transmission main, City of Paris, Texas.

14" Transmission main from the City of Paris to Daisy Farms; 20" raw water main from Nextera Energy to Daisy Farms

36" raw water transmission main for Lamar Energy Center, Paris, Texas.

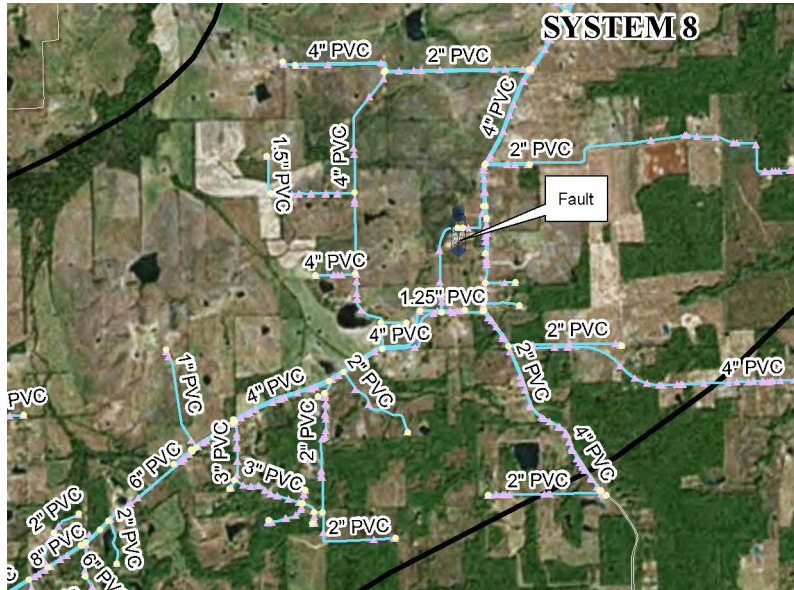
### WATER LINE IMPROVEMENTS FOR:

- 410 WSC
- Bright Star-Salem SUD
- Campbell WSC
- Delta County MUD
- Gafford Chapel WSC
- Golden WSC
- Hickory Creek SUD
- Lamar County WSD
- Oak Grove WSC
- Red River County WSC
- Shady Grove WSC

### WATER LINE IMPROVEMENTS FOR THE CITIES OF:

- |                 |               |
|-----------------|---------------|
| • Alba          | • Greenville  |
| • Arp           | • Howe        |
| • Avery         | • Malakoff    |
| • Blossom       | • Paris       |
| • Bogata        | • Point       |
| • Bonham        | • Reno        |
| • Commerce      | • Roxton      |
| • Cooper        | • Star Harbor |
| • DeKalb        | • Terrell     |
| • Deport        | • Tioga       |
| • Detroit       | • Trenton     |
| • East Tawakoni | • Trinidad    |
| • Edgewood      | • Windom      |
| • Emory         | • Winnsboro   |
| • Farmersville  | • Whitesboro  |

## Geographic Information Systems (GIS)



Your organization manages a wide range of data - from water, wastewater, drainage and other infrastructure, to land use, zoning, city limits, emergency services, tax records, property identifiers, work orders, citizen service requests, Police mapping, and more. Imagine being able to view and obtain details on all of these diverse data records, using your office computer or a laptop, or through a Web based browser, accessing multiple computer based data files and current, detailed aerials of your community. This is GIS - Geographic Information Systems - Hayter Engineering's expert GIS personnel can develop this for your organization.

Our surveyors and GIS personnel can update your city limits. An accurate, current city limit map can ensure that you are collecting all property taxes due to the City, and billing appropriate utility rates.

Hayter Engineering's survey personnel can assist you in locating (to within 1") items such as water meters, fire hydrants, valves, manholes, cleanouts, etc. Once located we can create and structure a detailed GIS system for your needs, using highly accurate aerials, and detailed system maps which link to all of the necessary data you need—fire flows, hydrant data, sewer line and service information, zoning and ordinance background, tax records, utility billing records, and more—all linked to a particular property or location. We can structure this as a public data base, searchable by your citizens, and separate some parts as municipal access only, according to your wishes.

We have offered a full range of municipal planning services for 60 years, including comprehensive municipal plans, regional plans and project specific plans.

GIS based planning and mapping can greatly enhance administration of the complex and varied needs of your community.

### SERVICES OFFERED:

- Water & Wastewater Systems Mapping
- Drainage Maps
- Base Mapping
- Parcel Maps
- New City Limit Maps
- Subdivision Water & Wastewater Systems Mapping
- Registered Sex Offender and Sex Offender Free Zones
- Zoning Maps
- Flood Plain Mapping
- CCN Maps
- Real-time work order mapping

### PROJECTS PERFORMED:

- Water & Wastewater Systems, Riverbend WRD (Red River Army Depot, New Boston, TX)
- Water System, Lamar County WSD
- Water & Wastewater Systems, Subdivision Water & Sewer Update, Floodplain, Streets, Lots, Aerials, City of Reno, TX
- Police Department, City of Reno, TX
- Water & Wastewater Systems, Grand Saline, TX
- Comprehensive Plan, City of Cooper, TX
- Comprehensive Plan, City of Trinidad, TX
- Smoke Testing Map Annual Updates, City of Sherman, TX
- Water & Wastewater Systems, Parcels, CCN, City of Bonham, TX
- Water System, City of Blossom, TX
- Police Department, City of Commerce, TX
- Police Department, City of Tioga, TX
- Texas A & M University - Commerce Walking Track, Commerce, TX
- Trail de Paris Master Plan, Paris, TX
- Smoke Testing Map, Whitesboro, TX

## Permit Assistance



Your permitting requirements need a timely and complete application, based upon a thorough understanding of both State and Federal regulations, and your specific infrastructure.

Hayter Engineering has a detailed knowledge of permit regulations, and will work closely with you to complete the permitting process in a timely and efficient manner.

### CCN applications and/or amendments have been performed for:

- Bonham
- Cash SUD
- Daisy Dairy
- De Kalb
- East Tawakoni
- Lamar County WSD
- Pink Hill WSC

### Permit assistance has also been provided to the Cities of:

- Alba
- Arp
- Avery
- Bailey
- Blossom
- Bogata
- Bonham
- Bowie
- Callisburg
- Commerce
- Crowell
- Cooper
- De Kalb
- Deport
- Detroit
- East Tawakoni
- Edgewood
- Emory
- Fairfield
- Kemp
- Malakoff
- Mallard Point
- Muenster
- Paris
- Pecan Gap
- Point
- Quinlan
- Reno
- Roxton
- Saint Jo
- Savoy
- Star Harbor
- Sun Valley
- Tioga
- Trenton
- Trinidad
- Van Alstyne
- West Tawakoni
- Whitesboro
- Wills Point
- Windom
- Winnsboro

### SERVICES OFFERED:

- Wastewater Discharge Permits
- Stormwater Pollution Prevention Plans
- Permit Amendment Applications
- Lagoon Discharge Permits & Lagoon Closure Permits
- Well Permits
- Sludge Permits
- Reservoir 404 Corps of Engineers Permits
- Water Use Permits
- Private Sewer Discharge Permits
- CCN (Certificate of Convenience and Necessity) Applications and Amendments

### PERMIT ASSISTANCE TO:

- Delta County Municipal Utility District
- Franklin County Water District
- Lamar County Water Supply District
- Petty Water Supply Corporation
- Pleasant Oaks MHP
- Prairiland ISD
- Randolph Water Supply Corporation
- Rivercrest ISD
- Sharlimar Ft Worth LP
- Southwest Water Company
- Sundown Ranch

## Public / Office Buildings



The public buildings in your community reflect your commitment to the future and to municipal service. Careful planning is essential to develop an aesthetically pleasing site that will maximize the public use of the facility.

Your public building also requires environmental approvals and thorough, complete civil design and construction specifications for grading, paving, drainage, water and wastewater service.

During construction, your project deserves careful, independent construction review. Hayter Engineering can provide all required construction related services including job site review, construction administration, material testing, record drawings and warranty review.

For more than 60 years, Hayter Engineering has assisted municipalities and private entities in obtaining well designed, attractive, functional and cost-effective public building facilities.

Our group of professional planners, surveyors and engineers will work closely with you to achieve projects which fit your budget and schedule, and which incorporate quality design.

### SERVICES OFFERED:

Environmental Site Assessment  
Boundary Surveying  
Platting  
Site Planning  
Civil Engineering Design  
Construction Bid & Award  
Construction Phase Engineering

### PROJECTS PERFORMED:

- Lamar County Water Supply District, Office Building, Brookston, TX
- Storm Shelter, Point, TX
- Storm Shelter, East Tawakoni, TX
- Santa Fe Depot, Paris, TX
- New City Hall, Bonham, TX
- Storm Shelter, Avery, TX
- Storm Shelter, De Kalb, TX
- Kelso Technologies Building, Bonham, TX
- Site Plant Layout - Covenant Christian Church, Paris, TX
- Recreational Classroom Facility, First Baptist Church, Bonham, TX
- Fire Station, Reno, TX
- Animal Shelter, Commerce, TX
- City Park Restroom, Commerce, TX
- Mary King Park Restroom Facility, Lake Bob Sandlin State Park, Titus County, TX

## Surveying Services - Design



Hayter Engineering offers a wide variety of survey related services to meet all of your survey needs. We have completed over 1,000's of topographic design surveys for public and private clients. We also offer boundary surveys for property transactions, construction staking for new and existing facilities improvements, master plats for proposed developments, and surveys for many other purposes.

### DESIGN SURVEYS INCLUDE:

#### Topographic Surveys for Infrastructure Design for Rural Water Systems:

- 410 WSC
- Bright Star-Salem SUD
- Campbell WSC
- Central Bowie County WSC
- Delta County MUD
- Franklin County WD
- Gafford Chapel WSC
- Golden WSC
- Lamar County WSD
- Oak Grove WSC
- Red River County WSC
- Shady Grove WSC

#### Topographic Surveys for Infrastructure Design in the Cities of:

- Alba
- Annona
- Avery
- Blossom
- Bonham
- Bowie
- Commerce
- Cooper
- De Kalb
- Deport
- Detroit
- East Tawakoni
- Edgewood
- Emory
- Fairfield
- Grand Saline
- Greenville
- Howe
- Malakoff
- Miller's Cove
- Paris
- Point
- Quinlan
- Reno
- Roxton
- Terrell
- Tioga
- Trenton
- Trinidad
- Whitesboro
- Whitewright
- Wills Point
- Windom
- Winnsboro
- Wolfe City

- Kimberly-Clark Corporation, Paris, Texas
- Kings Inn, Paris, Texas
- Lamar Power Partners/Panda Energy, Paris, Texas
- Daisy Dairy, Paris, Texas
- LaQuinta Inns, Lindale, Allen, and Eules, Texas
- Brentwood Terrace Healthcare and Rehab Center, Paris, Texas
- Educational Facility design surveys for: Paris ISD, North Lamar ISD, Prariland ISD, Chisum ISD, Cooper ISD, Detroit ISD, Clarksville ISD, and Paris Junior College
- Paris Regional Medical Center, Paris, Texas
- Paris Lakes Medical Center, Paris, Texas
- RKMS - Neighbors Emergency Clinic, Paris, Texas
- IHOP, Mt. Pleasant, Texas
- First Federal Bank, Clarksville and Paris, Texas
- Hydro Aluminum Smelting Plant, Commerce, Texas
- Campbell's Soup Corporation, Paris, Texas
- Turner Industries, Paris, Texas
- Southern Multifoods, Paris, Texas
- Potters Industries, Paris, Texas
- Subway, Paris, Texas
- Paris Towne Center, Paris, Texas
- Lamar Industrial, Mt. Pleasant, Texas
- Brownstone Development, Nash, Texas
- Lamar Industrial, Mt. Pleasant, Texas

### SERVICES OFFERED:

- FEMA Surveys
- ALTA & Land Title Surveys
- Construction Site & Utility Line Staking
- Boundary Surveys
- Construction Layout
- Easement Surveys
- GPS Surveying
- Terrestrial Lidar
- Photogrammetric Ground Control
- Preliminary & Final Plats
- Record Drawing & Improvement Surveys
- Topographic Surveys
- GIS/LIS Surveys
- Design Surveys

### FOR MORE INFORMATION CONTACT:

Kevin K. Whitley, R.P.L.S.  
Vice President / Survey Manager  
Phone: 903-785-0303  
Email: [kwhitley@haytereng.com](mailto:kwhitley@haytereng.com)

## Planning



Planning is a broad topic. Plans may include comprehensive community plans which include population growth, land use/zoning, housing, streets, drainage, thoroughfares, recreation and open space, wastewater, water, zoning, and capital improvements. This type plan is more general in nature, and is intended to gather support for the direction your community will take over the next 5, 10 and 20 years. Other plans are more specific in nature, and may cover a single infrastructure type, emergency planning, drought preparedness, and many other types of plans.

We have extensive experience in comprehensive broad based type planning as well as very specific detailed planning for specific needs. Thorough planning is essential for obtaining the high quality future results your community deserves.

### SERVICES OFFERED:

- Comprehensive Master Plans
- Thoroughfare Plans
- Master Drainage Plans
- Master Street Plans
- Open Space Plans
- Dam Safety Emergency Action Plans
- Site Plans
- Water Conservation Plans
- Drought Contingency Plans
- Stormwater Pollution Prevention Plans
- Water Reuse Plans
- Risk Management Plans
- Industrial Pretreatment Plans
- Monitoring Plans

### PROJECTS PERFORMED:

- Master Plan, Golden WSC, Alba, TX - 1998 and 2011
- Master Plan, Bright Star-Salem SUD, Alba, TX
- Master Plan, Delta County MUD, Cooper, TX
- Master Plan - Oak Grove WSC, Oak Grove, TX
- Master Plan, Cooper, TX
- Master Plan, DeKalb, TX
- Master Plan, East Tawakoni, TX
- Master Plan, Point, TX
- Master Plan, Trenton, TX
- Master Plan, Trinidad, TX
- Master Drainage Plan, Commerce, TX
- Master Drainage Plan, Paris, TX
- Comprehensive Plan - Stormwater Drainage, Bonham, TX
- Master Drainage Plan, DeKalb, TX
- Master Drainage Plan, Stillhouse Estates, Paris, TX
- Master Drainage Plan, Reno, TX
- Master Drainage Plan, Edgewood, TX
- Master Drainage Plan, Oak Creek Addition, Paris, TX

## Survey Services - Construction Layout



Hayter Engineering has been an integral part in many construction layout projects for both public and private clients. Our construction layout projects have ranged in size from one homeowner on a half-acre lot to the 7,000 acre Daisy Dairy Facility where multiple engineers, architects, and construction firms were involved.

### CONSTRUCTION LAYOUT SURVEYS INCLUDE:

- City of Paris CIP Water & Sewer Line Replacements
- Daisy Dairy Facility
- City of Commerce WWTP Lagoon Closure
- Lamar Power Partners/Panda Energy 107 acre facility
- Daisy Farms Raw water main 4+ miles
- Paris Lakes Regional Medical Center
- Oak Creek Subdivision Layout
- Sewer line staking for numerous municipalities
- Water line staking for numerous municipalities
- Street layout staking for numerous municipalities
- Several commercial developments including: Holiday Inn Express and Comfort Suites - Paris TX; Brentwood Terrace Healthcare & Rehab Center - Paris TX; LaQuinta Inn - Lindale, Allen & Euless TX; First Federal Bank- Paris and Clarksville TX; IHOP – Mt. Pleasant TX;
- Hydro Aluminum Smelting Plant
- City of Blossom city lake dam rehabilitation

Utilizing GPS as well as conventional survey equipment in the field and AutoCAD and GIS software in the office we can assure you that all of your construction layout requirements can be met. Additionally, at Hayter Engineering we are very familiar with coordinating between engineers, architects, government agencies and contractors to ensure projects stay on schedule.

### SERVICES OFFERED:

FEMA Surveys  
ALTA & Land Title Surveys  
Construction Site & Utility Line Staking  
Boundary Surveys  
Construction Layout  
Easement Surveys  
GPS Surveying  
Photogrammetric Ground Control  
Preliminary & Final Plats  
Record Drawing & Improvement Surveys  
Topographic Surveys  
GIS/LIS Surveys  
Design Surveys

### FOR MORE INFORMATION CONTACT:

Kevin K. Whitley, R.P.L.S.  
Vice President / Survey Manager  
Phone: 903-785-0303  
Email: [kwhitley@haytereng.com](mailto:kwhitley@haytereng.com)



## Surveying Services - FEMA



Hayter Engineering has completed numerous FEMA related surveys for public and private clients. We offer multiple services, including Special Flood Hazard Area Delineation, Elevation Certificates, and Letter of Map Change applications.

### FEMA Related Surveys Include:

- T-Shirt Shoppe, Paris, TX - LOMR Application
- Sonic Restaurant, Paris, TX - Elevation Certificate
- Pickering LOMR Application, Paris, TX - for business complex which included Paris Chiropractic, Paris Glam, Peoples Insurance, Cash Max, On Call Home Health, The Vibe Health & Fitness Studio, All Cuts Hair Salon, and Super Tan
- Salzman LOMR-F Application, Paris, TX - for business complex which included Paris Medical Plaza, Primary Care Associates, Digital Mammography, Beautiful Savior Lutheran Church, and Calvary Paris Church
- Lamar Energy Resources, Lamar County, TX - Special Flood Hazard Area Determination & Delineation for multiple properties and easements owned by Lamar Energy Resources.
- Paris Towne Center, Paris, TX - Flood Zone Delineation
- Subway Sandwiches, Paris, TX - FEMA Floodplain Protest, Flood Elevation Delineation
- LOMR Applications for: Multiple Duplex, Single Family Residence, and Multiple Lot/Parcel
- Elevation Certificates & LOMR Applications for Investment properties and bank-owned properties
- Special Flood Zone Hazard Area Determination and Delineation for multiple subdivisions and additions.

In the field we utilize both conventional surveying equipment and GPS on a Real Time Network allowing us to economically cover a much larger area. In-office we are equipped with AutoCAD and GIS software to handle files provided by FEMA and to expedite the preparation of FEMA applications.

Hayter Engineering is very familiar with coordination efforts between engineers, architects, government agencies and contractors to ensure your project stays on schedule.

### SERVICES OFFERED:

FEMA Surveys  
ALTA & Land Title Surveys  
Construction Site & Utility Line Staking  
Boundary Surveys  
Construction Layout  
Easement Surveys  
GPS Surveying  
Photogrammetric Ground Control  
Preliminary & Final Plats  
Record Drawing & Improvement Surveys  
Topographic Surveys  
GIS/LIS Surveys  
Design Surveys

### FOR MORE INFORMATION CONTACT:

Kevin K. Whitley, R.P.L.S.  
Vice President / Survey Manager  
Phone: 903-785-0303  
Email: [kwhitley@haytereng.com](mailto:kwhitley@haytereng.com)